



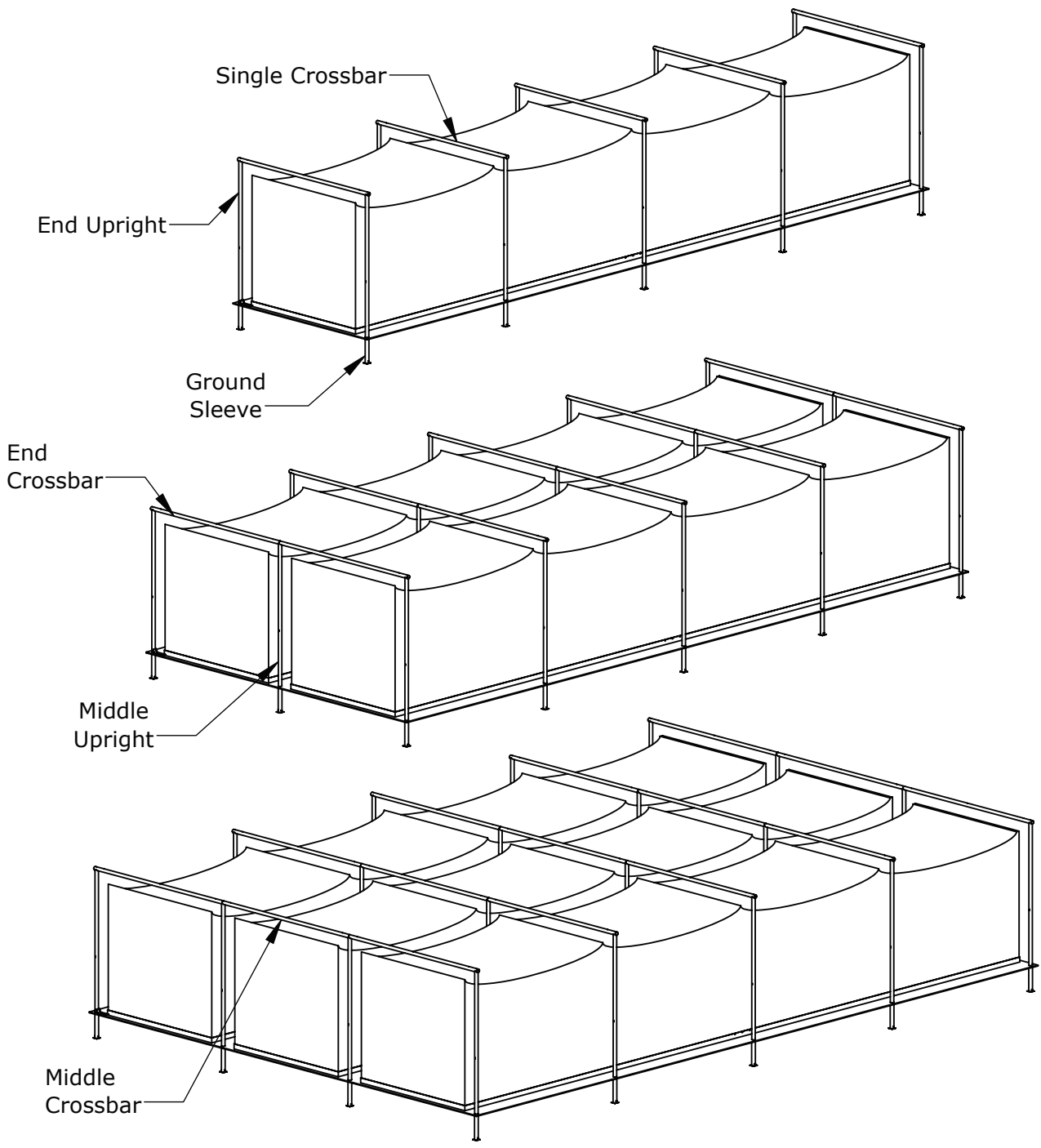
1-888-975-3343

Install Instructions

Ground Sleeve Overhead Batting Tunnel

Product No.	Product Description
BT OBS	Single Baseball System
BT OBD	Double Baseball System
BT OBT	Triple Baseball System
BT OSS	Single Softball System
BT OSD	Double Softball System
BT OST	Triple Softball System

System Overview.....	ID-00079
Ground Sleeve Alignment Notch Detail.....	ID-00052
End Upright to Crossbar Attachment.....	ID-00037
Crossbar Splice Attachment.....	ID-00036
Double Pulley & Tether Attachment.....	ID-00034
Single Pulley & Tether Attachment.....	ID-00035
Rope Cleat Attachment.....	ID-00038
End Upright Extension Arm Attachment.....	ID-00030
Middle Upright Extension Arm Attachment.....	ID-00031
Net Attachment.....	ID-00080
Net Assembly.....	ID-00050
Storage & Disassembly.....	ID-00058

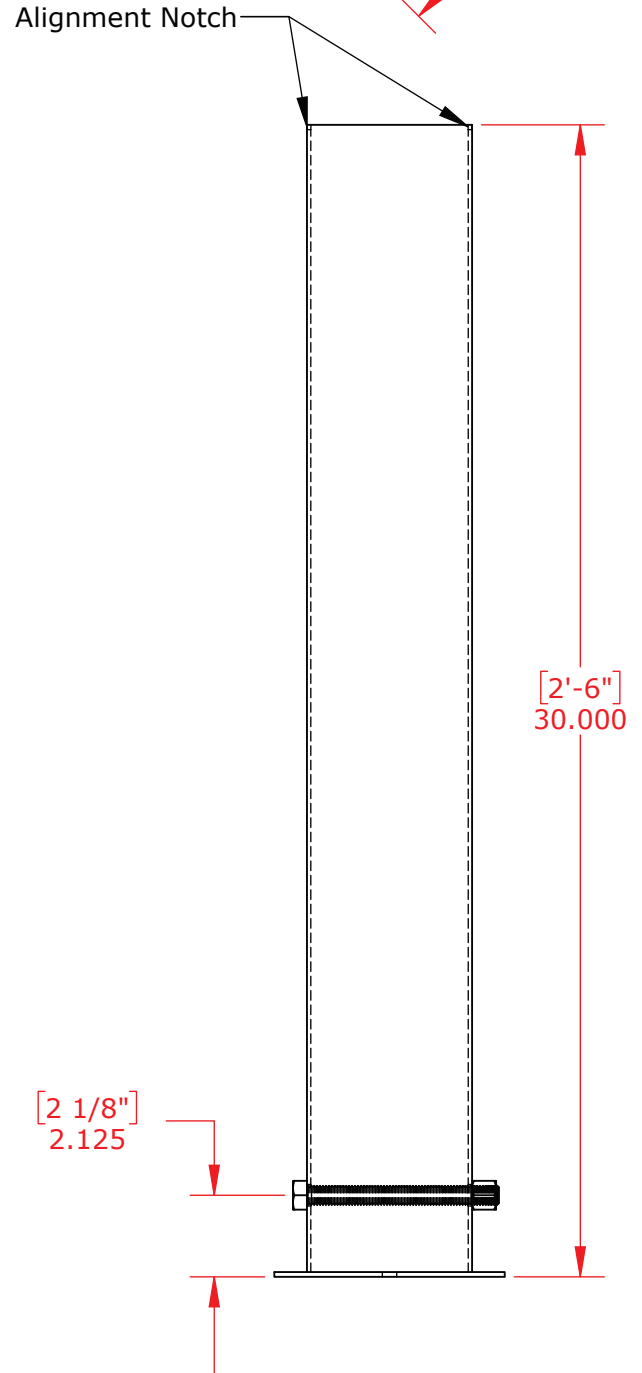
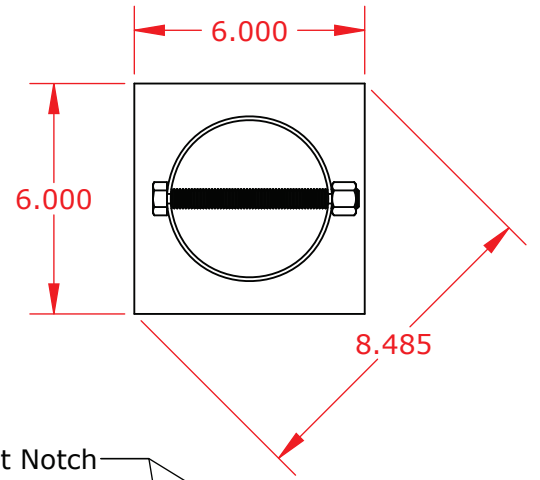
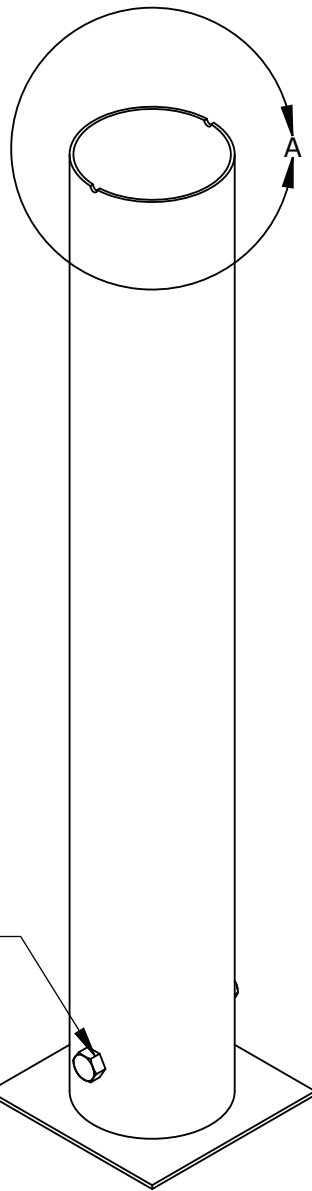
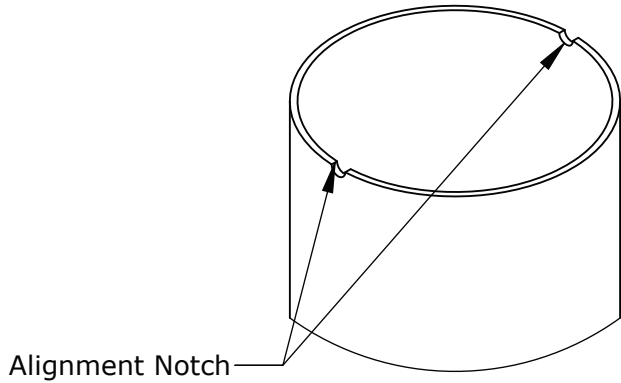


IMPORTANT NOTE: Please refer to the appropriate batting tunnel model ground sleeve layout for proper ground sleeve placement

Model	Sport	Style	# of Ground Sleeves	# of End Uprights	# of Middle Uprights	# of Single Crossbars	# of Middle Crossbars	# of End Crossbars
BTOBS	Baseball	Single	10	10	0	5	0	0
BTOBD	Baseball	Double	15	10	5	0	0	10
BTOBT	Baseball	Triple	20	10	10	0	5	10
BTOSS	Softball	Single	8	8	0	4	0	0
BTOSD	Softball	Double	12	8	4	0	0	8
BTOST	Softball	Triple	16	8	8	0	4	8

TITLE: Ground Sleeve Overhead Batting Tunnel Overview	DWG NO: ID-00079
SHEET 1 OF 1	

Stop bolt/alignment notches must be installed in correct position to allow for proper orientation of upright pole



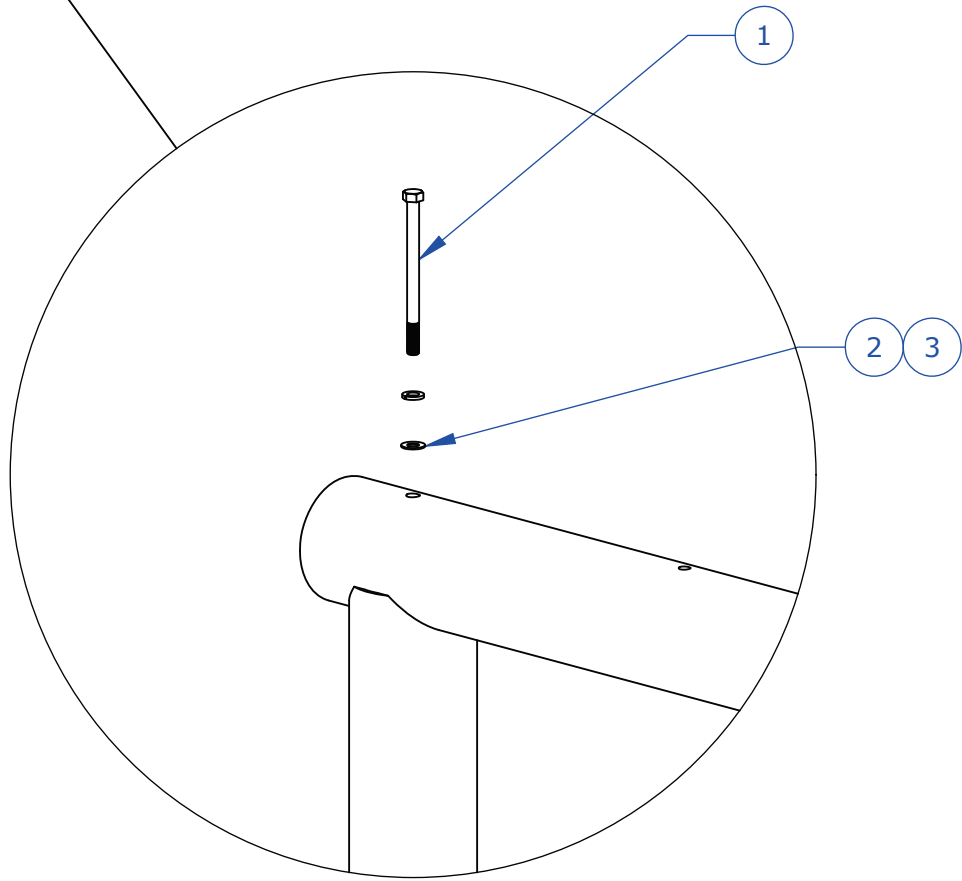
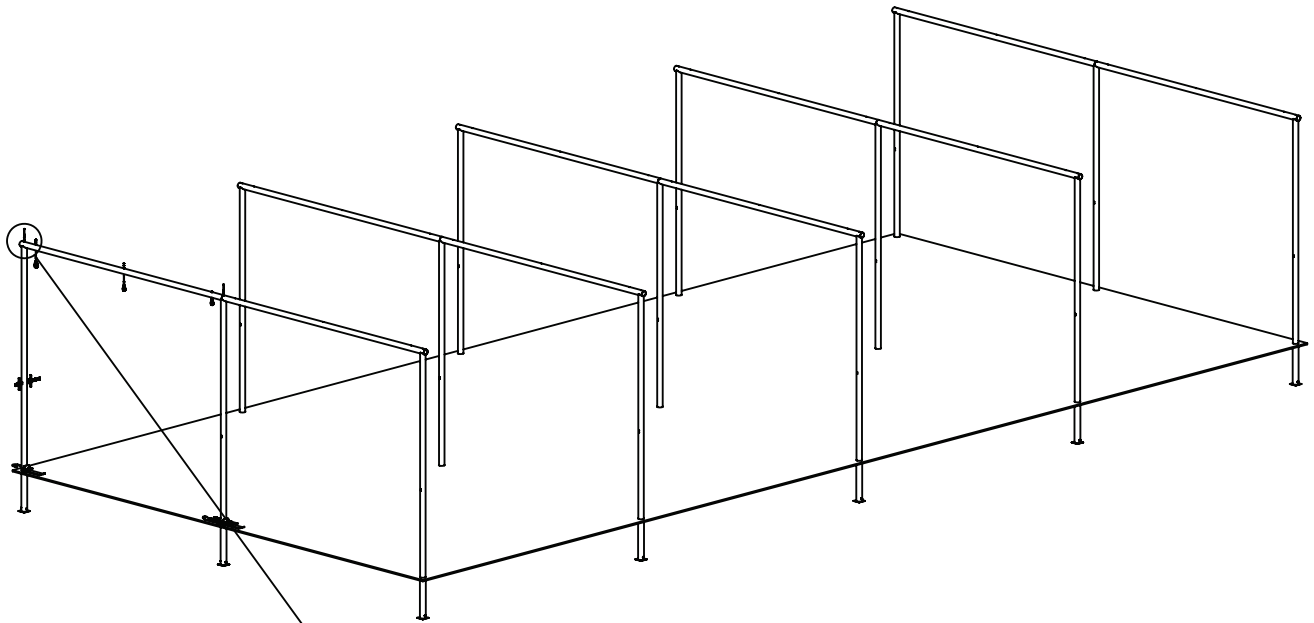
TITLE:

GS430 Ground Sleeve
Alignment Notch Detail

DWG NO:

ID-00052

SHEET 1 OF 1



ITEM NO.	QTY.	DRAWING NUMBER	SAP Part Number	DESCRIPTION
1	1	101-HHC3_8-16X5-SS	101-HHC-0040	3/8-16 x 5.00" Hex Head Bolt, 304 SS
2	1	110-FLW3_8-SS	110-FLW-0005	3/8 S.S. FLAT WASHER
3	1	110-SLW3_8-SS	110-SLW-0006	3/8-16 S. S. Lock Washer

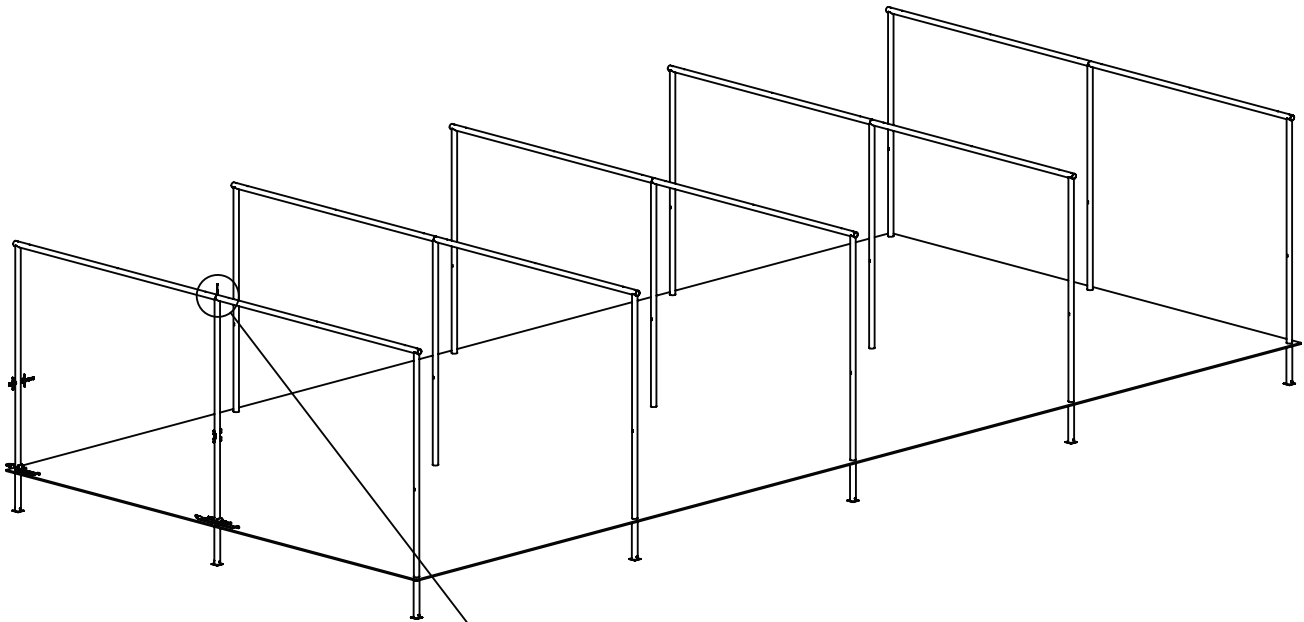
TITLE:

**End Upright to Crossbar
Attachment**

DWG NO:

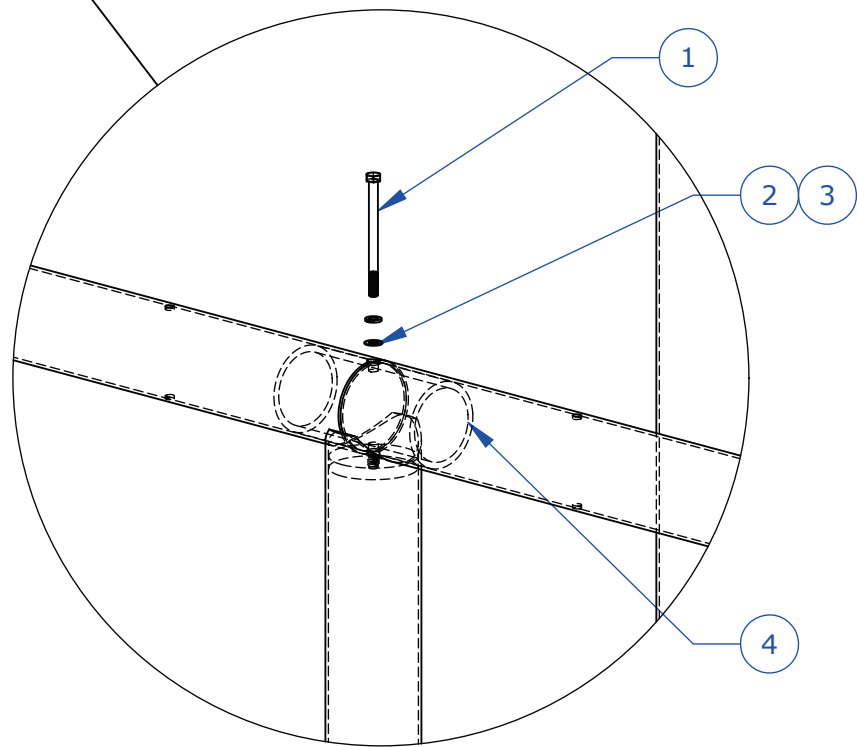
ID-00037

SHEET 1 OF 1



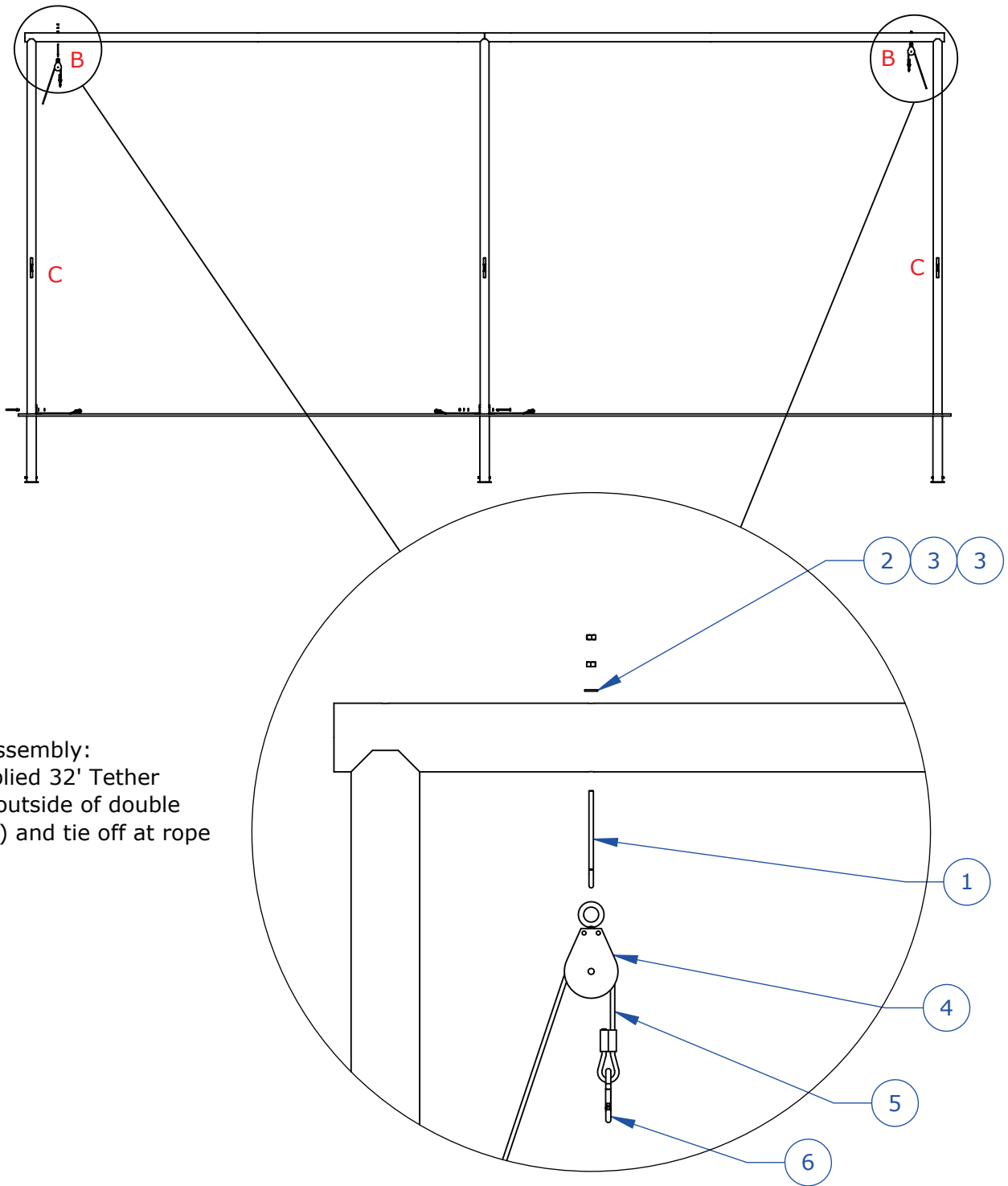
Note: Applies to double and triple tunnels only

Note: Install splice sleeves prior to fastening crossbars to middle uprights



ITEM NO.	QTY.	DRAWING NUMBER	SAP Part Number	DESCRIPTION
1	1	101-HHC3_8-16X5-SS	101-HHC-0040	3/8-16 x 5.00" Hex Head Bolt, 304 SS
2	1	110-FLW3_8-SS	110-FLW-0005	3/8 S.S. FLAT WASHER
3	1	110-SLW3_8-SS	110-SLW-0006	3/8-16 S. S. Lock Washer
4	1	BTO-SPLICE	E-0009-0002	Double & Triple Overhead Batting Tunnel Crossbar Splice

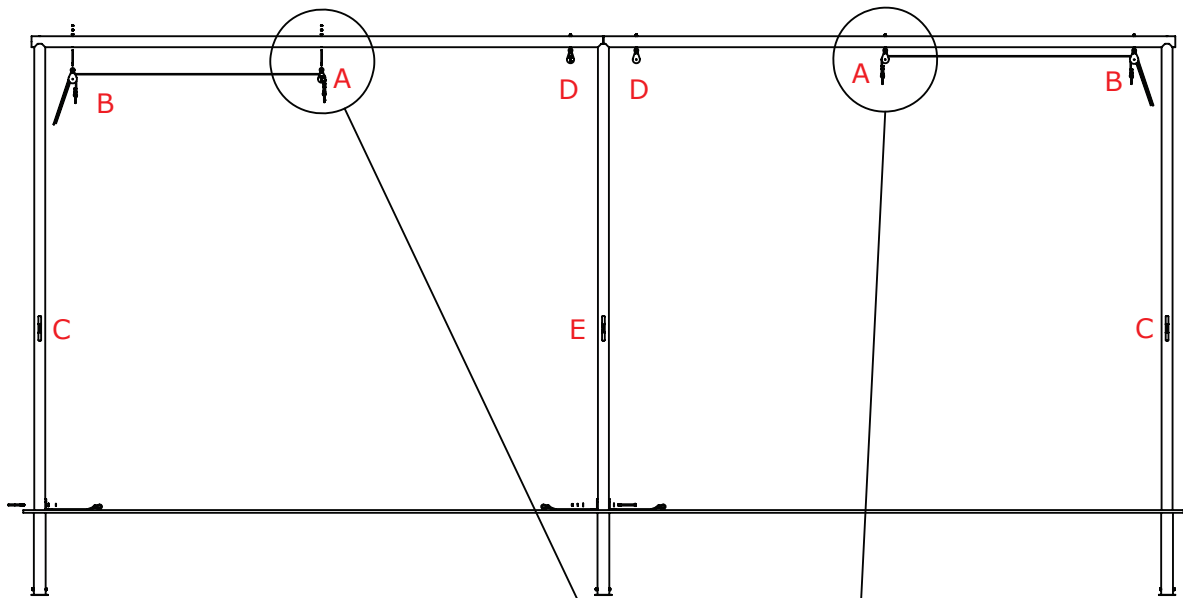
TITLE: Crossbar Splice Attachment	DWG NO: ID-00036
	SHEET 1 OF 1



Tether Assembly:
Run supplied 32' Tether
through outside of double
pulley (B) and tie off at rope
cleat (C)

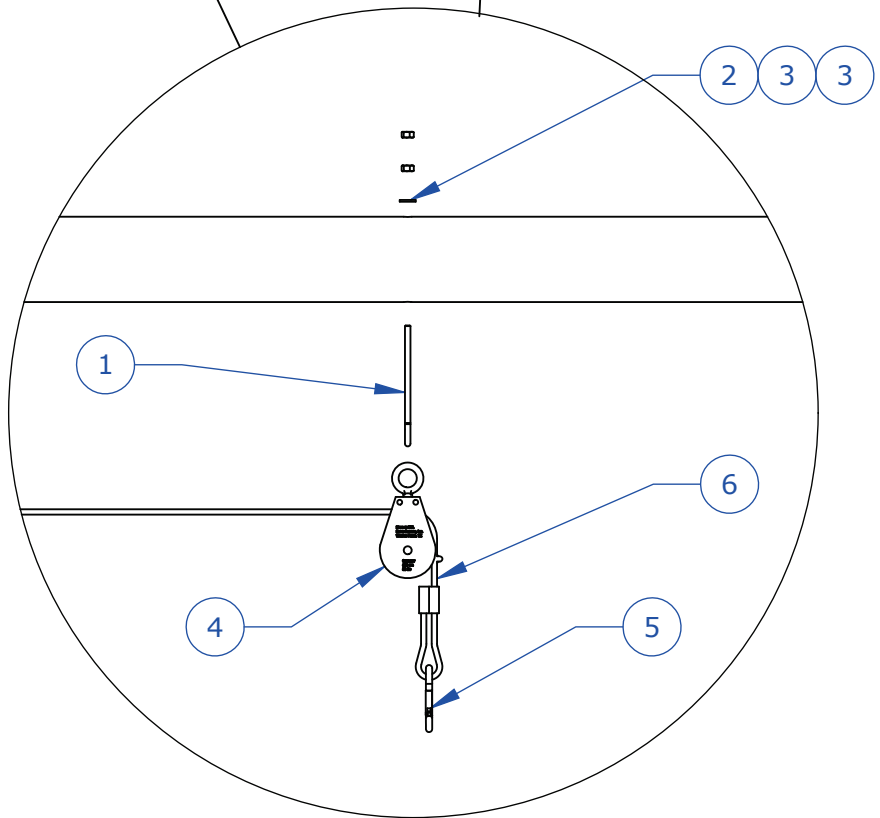
ITEM NO.	QTY.	DRAWING NUMBER	SAP Part Number	DESCRIPTION
1	2	100-EYE5_16-18X4.625-OPEN-STL	100-EYE-0010	5/16-18 x 4.625" Long Open Eye Bolt
2	2	110-FLW5_16-SS	110-FLW-0007	5/16 S.S. FLAT WASHER
3	4	107-HXN5_16-18-SS	107-HXN-0023	5/16-18 S.S. Hex Nut
4	2	3099T26	PURCHP-0642	1/4" Swivel Eye Wire Rope Block Pulley, Double Snatch Block Style, Galv., 800 lb WLL
5	2	TETHER-32	TETHER-32	32' Long Tether
6	2	113-209860	PURCHP-0009	5/16" Spring Hook

TITLE: Double Pulley & Tether Attachment	DWG NO: ID-00034
	SHEET 1 OF 1



Tether Assembly:
Run supplied 45' tether through single pulley (A) to double pulley (B) and tie off at rope cleat (C)

Run supplied 32' tether through single pulley (D) and tie off at rope cleat (E)



ITEM NO.	QTY.	DRAWING NUMBER	SAP Part Number	DESCRIPTION
1	4	100-EYE5_16-18X4.625-OPEN-STL	100-EYE-0010	5/16-18 x 4.625" Long Open Eye Bolt
2	4	110-FLW5_16-SS	110-FLW-0007	5/16 S.S. FLAT WASHER
3	8	107-HXN5_16-18-SS	107-HXN-0023	5/16-18 S.S. Hex Nut
4	4	113-BLOCKWR300-02548	PURCHP-0026	1/4" Swivel Block Pulley
5	2	113-209860	PURCHP-0009	5/16" Spring Hook
6	2	TETHER-45	TETHER-45	45' Long Tether

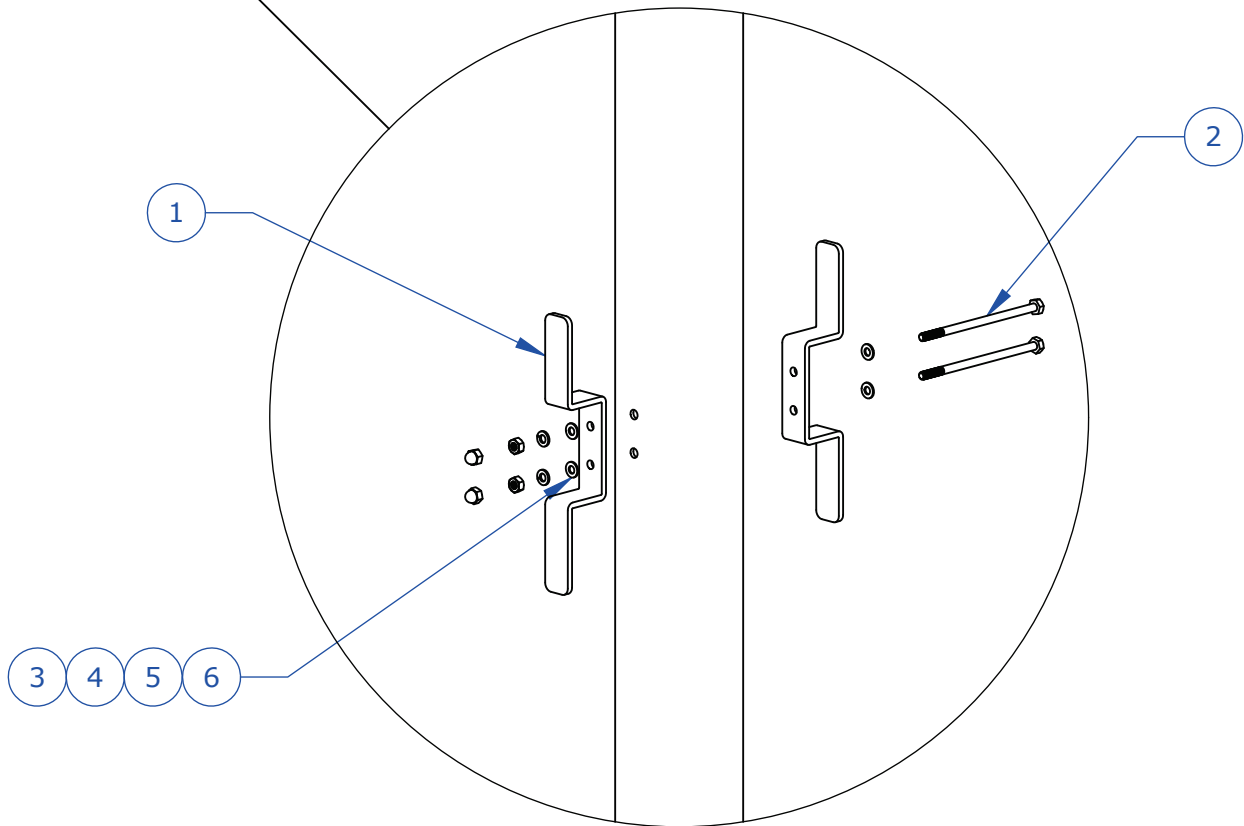
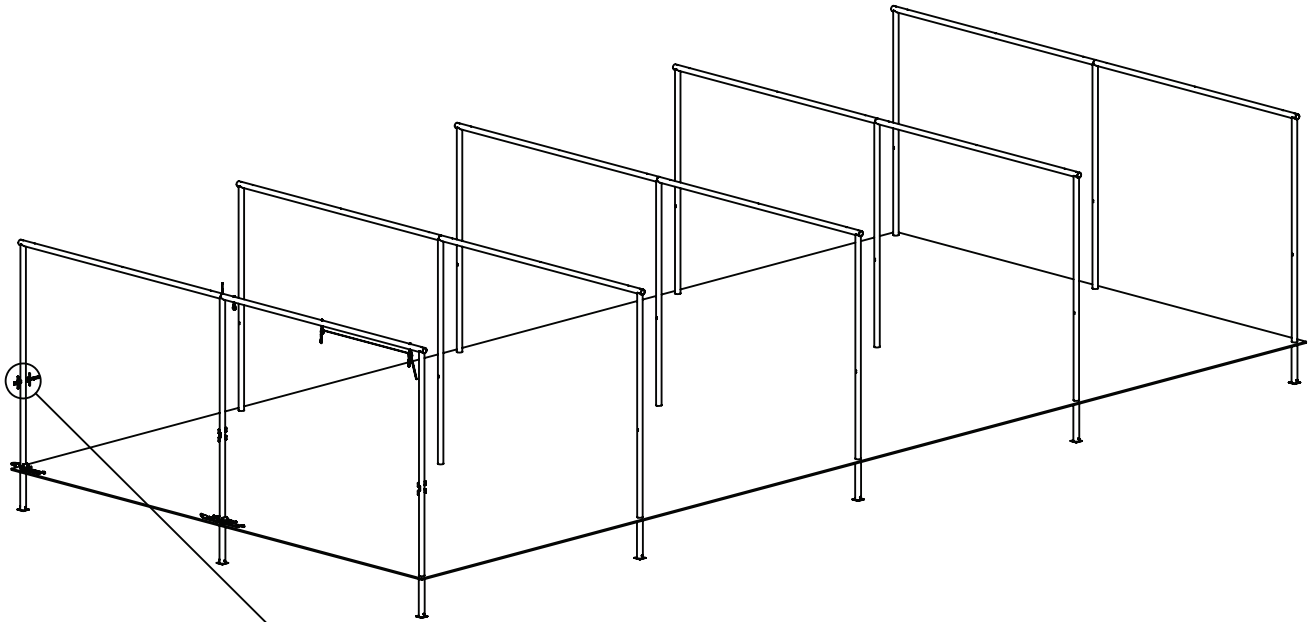
TITLE:

Single Pulley & Tether Attachment

DWG NO:

ID-00035

SHEET 1 OF 1



ITEM NO.	QTY.	DRAWING NUMBER	SAP Part Number	DESCRIPTION
1	2	Rope Cleat	E-1000-0013	Steel Rope Cleat
2	2	101-HHC1_4-20X5.00-SS	101-HHC-0026	1/4-20 x 5.00" hex head bolt, 304 SS
3	2	107-HXN1_4-20-SS	107-HXN-0010	1/4-20 STAINLESS STEEL HEX NUT
4	2	110-SLW1_4-SS	110-SLW-0002	1/4 SS LOCK WASHER
5	2	107-HXN1_4-20ACORN-SS	107-HXN-0006	1/4-20 S.S. Low Crown Acorn Nut
6	4	110-FLW1_4-SS	110-FLW-0002	1/4" S.S. FLAT WASHER

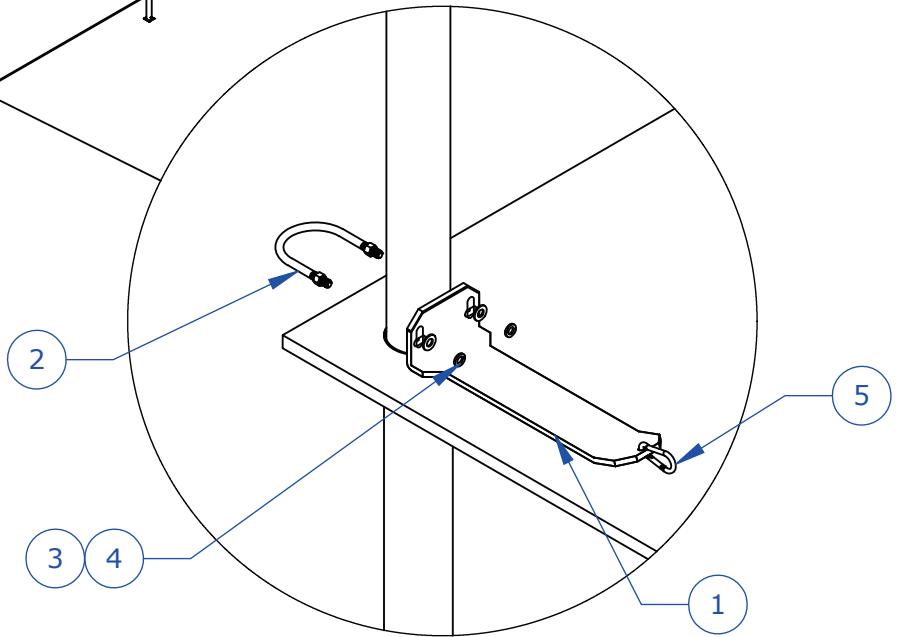
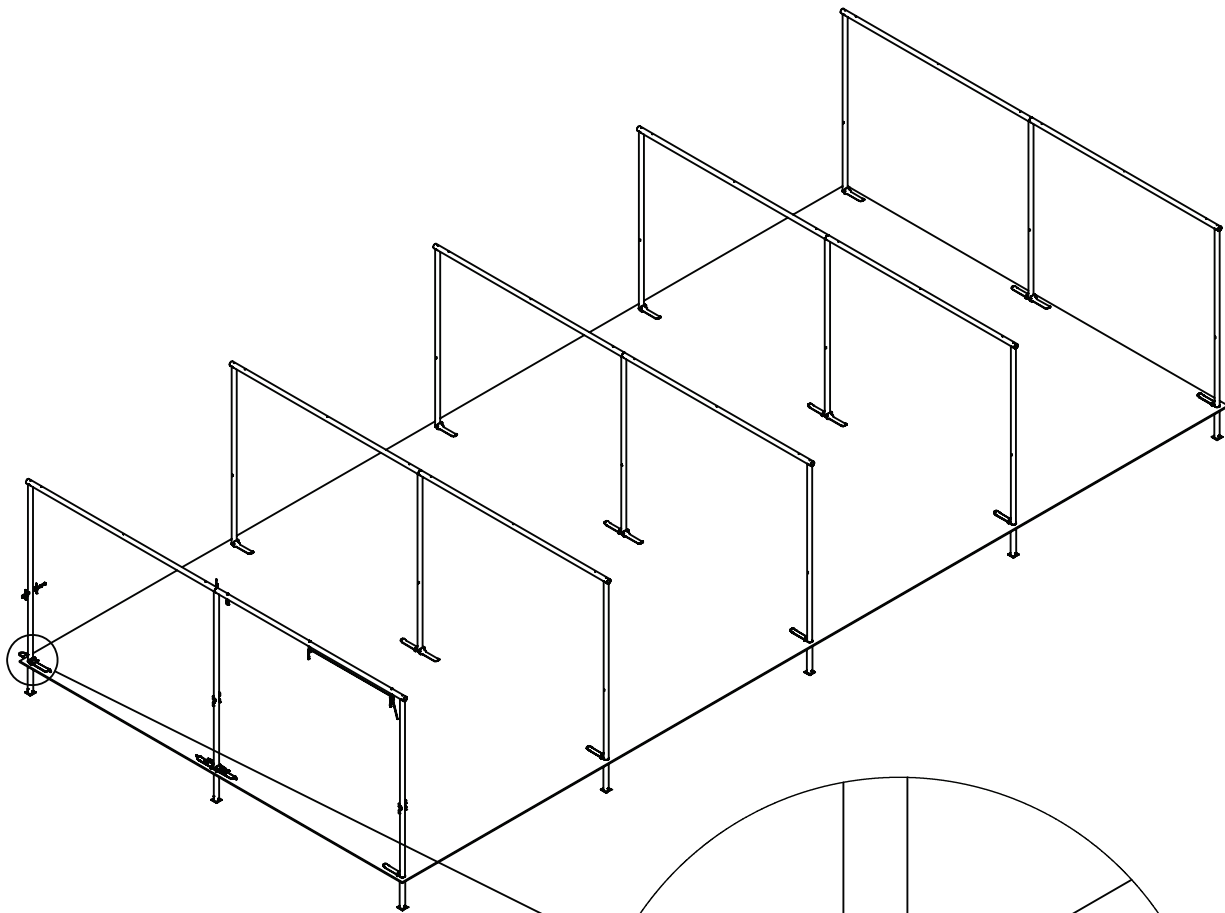
TITLE:

Rope Cleat Attachment

DWG NO:

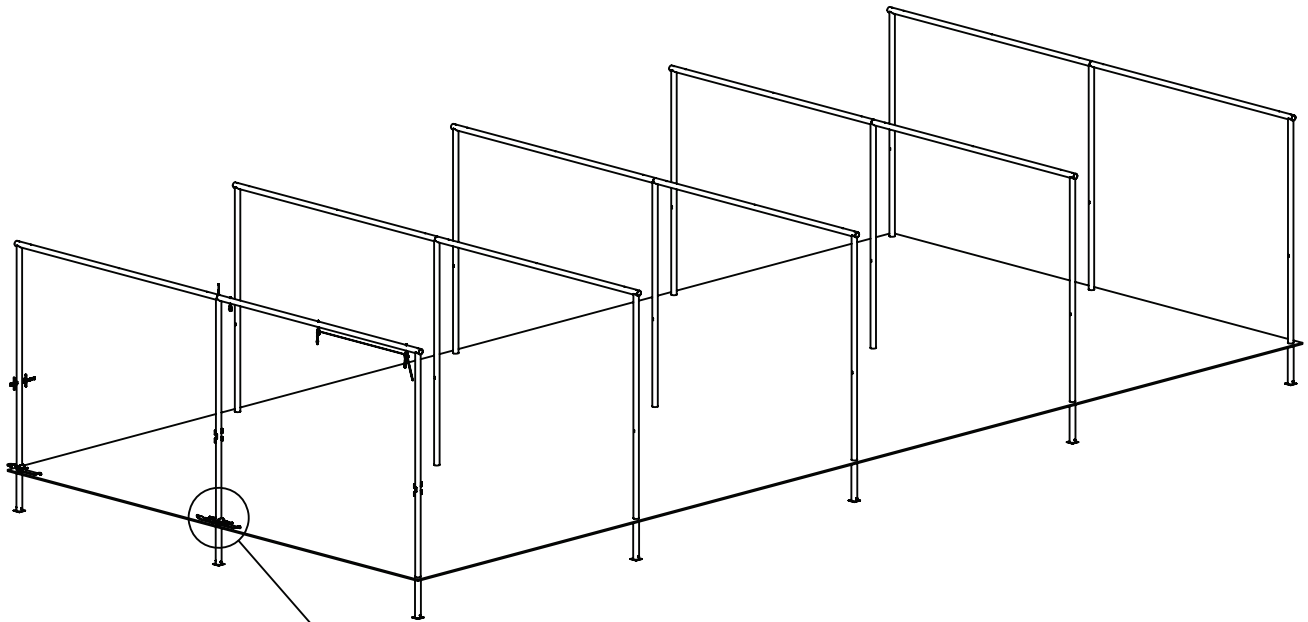
ID-00038

SHEET 1 OF 1

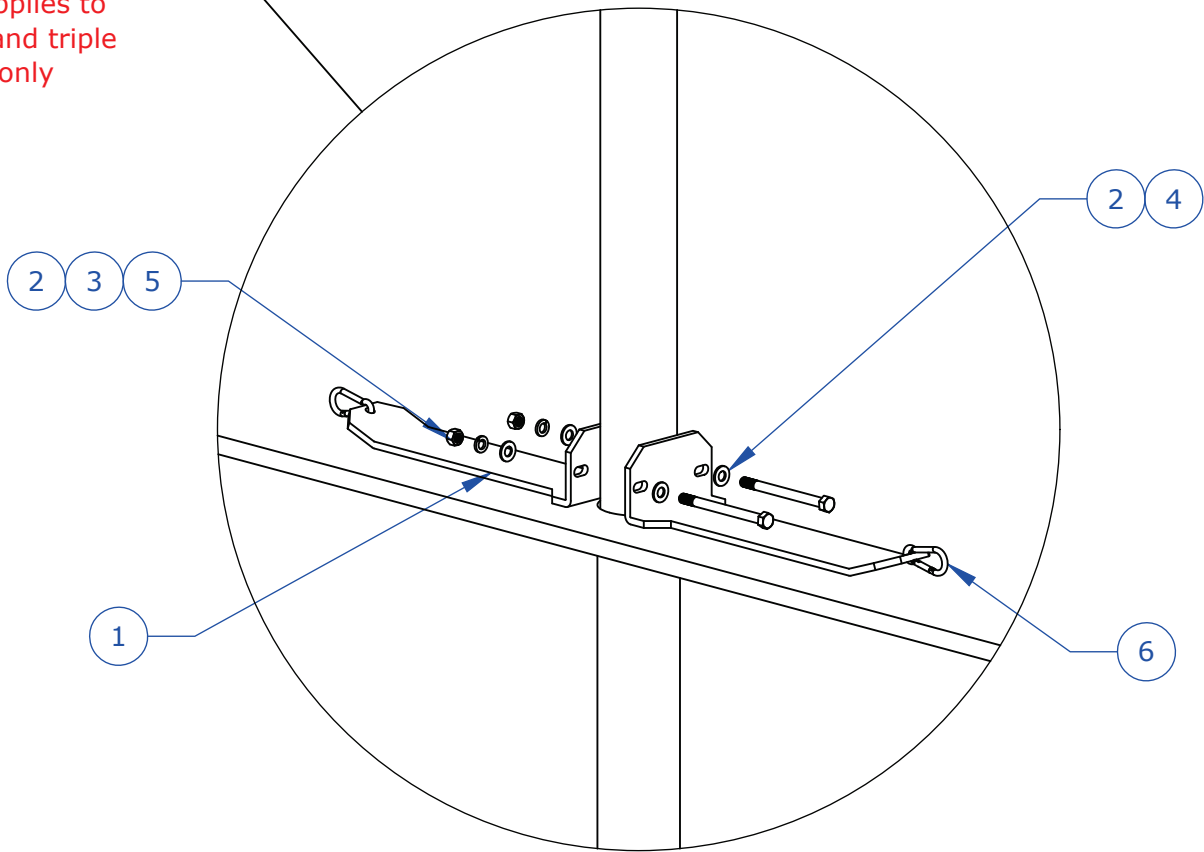


ITEM NO.	QTY.	DRAWING NUMBER	SAP Part Number	DESCRIPTION
1	1	104035	E-1000-0119	18" Fixed Extension Arm, Vertical Slots, Painted
2	1	102-UBOLT1_2-13X4X5.5	102-UBOLT-0002	Galv. U-Bolt, 1/2-13 x 4" x 5.5" with 1-1/2" Thread Length with (2) Hex Nuts
3	2	111-FLW1_2-GALV	111-FLW-0001	1/2 Galv. FLAT WASHER
4	2	111-SLW1_2-GALV	111-SLW-0001	1/2-13 GALV. LOCK WASHER
5	1	113-209860	PURCHP-0009	5/16" Spring Hook

TITLE: End Upright Extension Arm Attachment	DWG NO: ID-00030
	SHEET 1 OF 1



Note: Applies to double and triple tunnels only



ITEM NO.	QTY.	DRAWING NUMBER	SAP Part Number	DESCRIPTION
1	2	FEASH	E-0009-0004	18" Fixed Batting Tunnel Extension Arm
2	4	111-FLW1_2-GALV	111-FLW-0001	1/2 Galv. FLAT WASHER
3	2	111-SLW1_2-GALV	111-SLW-0001	1/2-13 GALV. LOCK WASHER
4	2	101-HHC1_2-13X6-SS	101-HHC-0013	1/2-13 x 6" hex head bolt 304 SS
5	2	107-HXN1_2-13-SS	107-HXN-0003	1/2-13 Stainless Steel Hex Nut
6	2	113-209860	PURCHP-0009	5/16" Spring Hook

TITLE: Middle Upright Extension Arm Attachment	DWG NO: ID-00031
	SHEET 1 OF 1

Step 1

Lay net out with net openings in desired locations

Step 2

Feed the 75'/55' tether lengthwise through the top/center of each net, weaving through the net about every 6". Clip tethers and net at each center pulley location (See below)

Step 3

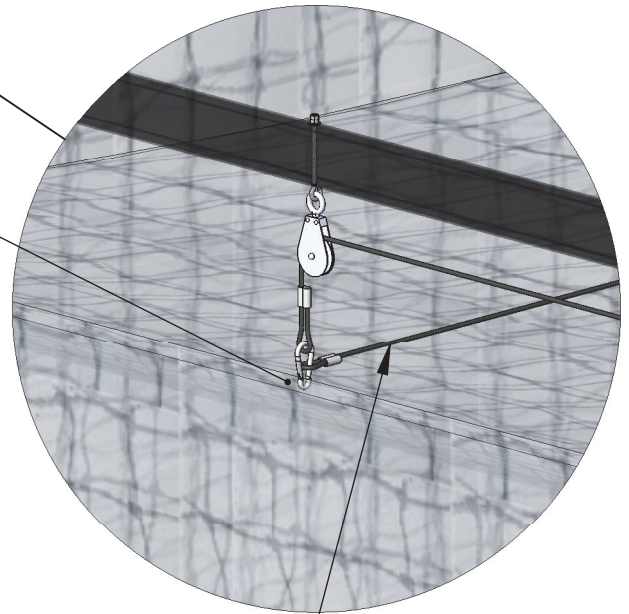
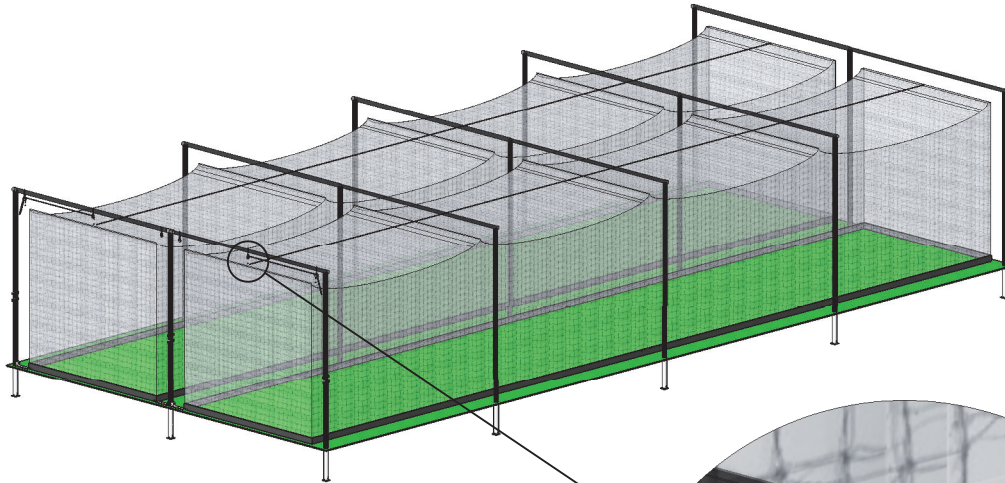
Clip the top corners and center of each net with supplied spring hooks at end pulley locations

Step 4

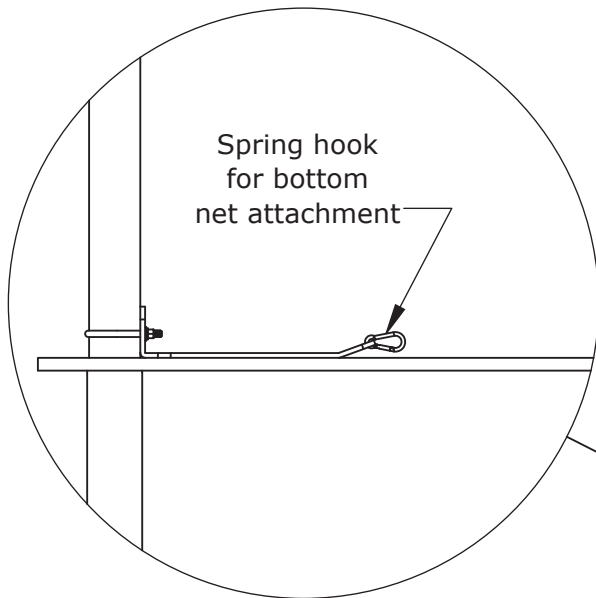
Raise the net into position, then attach weighted chain pockets to the bottom of the net (See ID-00050)

Step 5

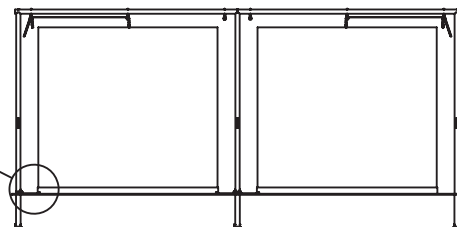
Secure the bottom of the net at each pole location to the extension arm using spring hooks. Clip hooks to the net border only



***Important Note:** Prior to raising the net, mark clip locations on the net for future removal and reinstallation of net



Lengthwise Tether
Baseball: 75'
Softball: 75'



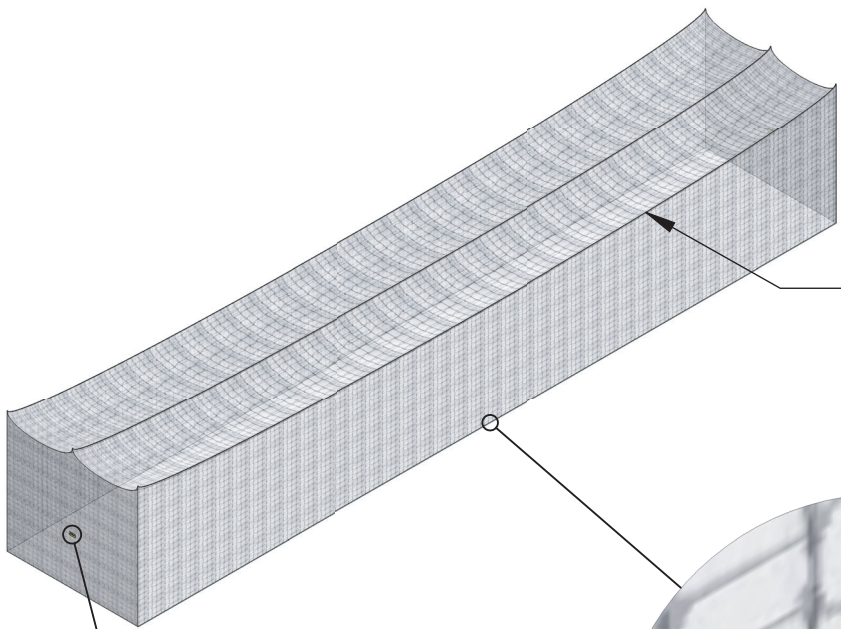
TITLE:

Net Attachment

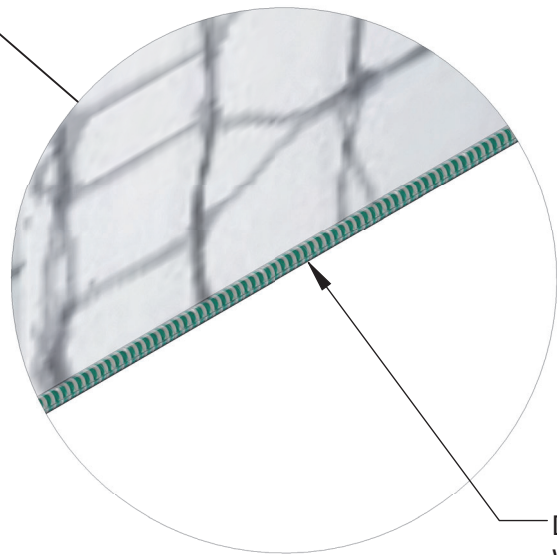
DWG NO:

ID-00080

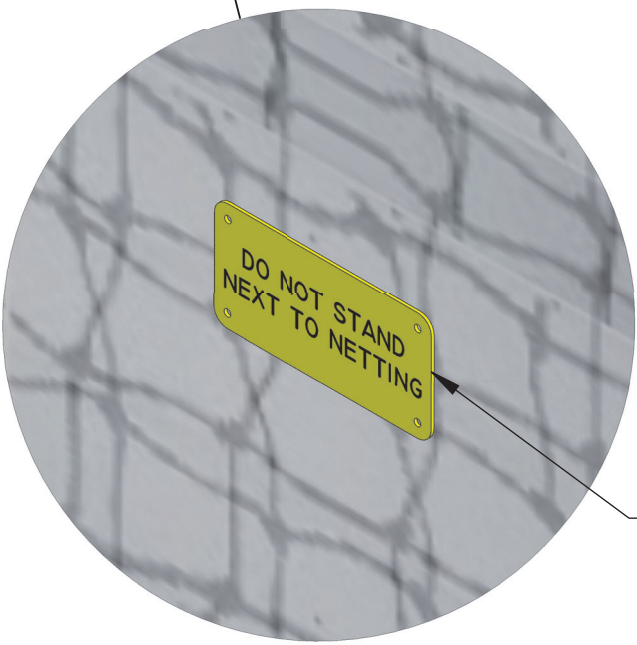
SHEET 1 OF 1



Note: Net sag may vary per system



Dura-Oceanmaster Weighted Line



Attach (1) "Do Not Stand Next to Netting" sign on each end of the net using supplied cable ties

TITLE: Net Assembly	DWG NO: ID-00050
	SHEET 1 OF 1

The net must be lowered to the ground when the wind speed is forecast to exceed 60 MPH and/or prior to any extreme wind events. Sportsfield Specialties, Inc. strongly recommends the removal of all nets prior to exposure to winter weather, including snow and/or ice storms. Whenever possible, the nets should also be lowered prior to any extreme wind events. Removal/Lowering of the nets will mitigate any unforeseen damage to the poles, nets and/or attachment hardware. Storing nets in a dry, pest free location will help extend the life of the nets. Sportsfield Specialties, Inc. will not be held liable or assume responsibility for any damage to the nets, poles and/or corresponding attachment hardware if the nets are not removed/lowered prior to the above described wind and/or weather events.

Step 1

Cut the zip ties connecting the weighted chain pocket to the net binding, taking care not to cut the net, if applicable.

Step 2

Unhook the spring hooks that attach the net to the extension arms, leaving the spring hooks attached to the net. Mark clip locations on the net for future reference, if applicable.

Step 3

Using the tethers, lower the net. Tie the rope cleat off at both ends.

Step 4

Fold the net and store in a clean, dry location.

NOTE: If desired, the structure can be removed and stored. Cap off the ground sleeves with the provided ground sleeve cap. Store hardware in a single container for future installation

TITLE:

Net Removal, Storage,
and System Disassembly

DWG NO:

ID-00058

SHEET 1 OF 1