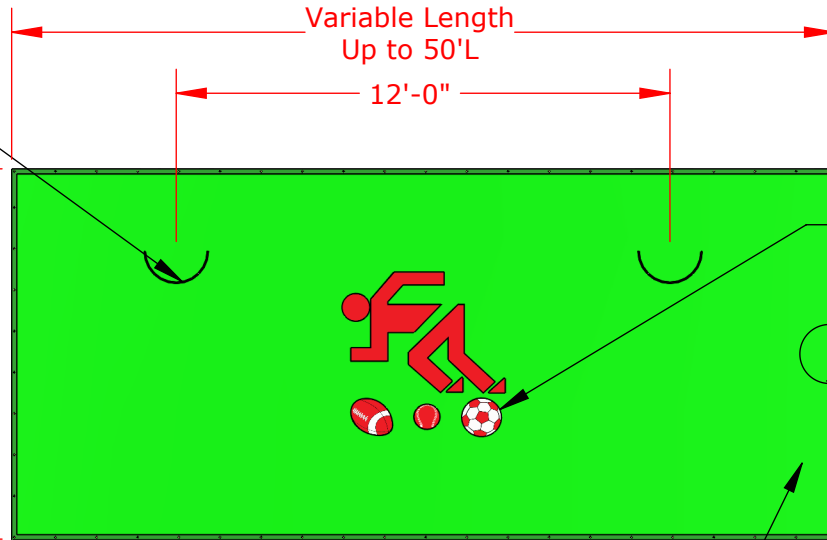


Half Moon Air Vent Cut Outs Every Twelve Feet (12'), Rectangular Air Vent Cut Outs Available Upon Request

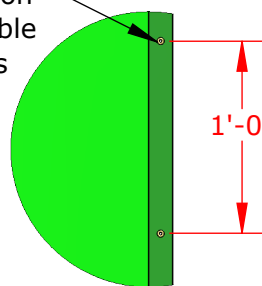
9'-0"
Custom Sizes
Up to 12'H
Available



Optional Custom Digitally Printed Lettering and/or Graphics Available Upon Request

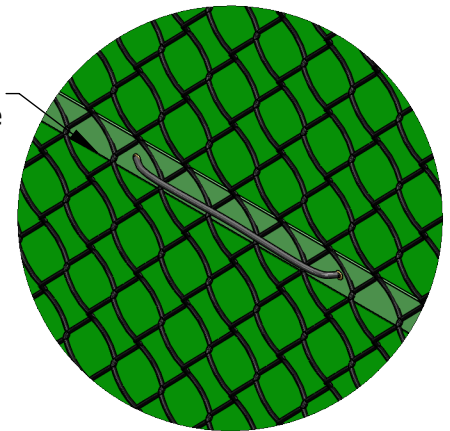
Vinyl Coated Polyester Mesh Construction,
Various Standard Colors Available

Brass Grommets Inserted in Heat Welded, Reinforced Perimeter Hem Every 12" on Center and Corners for Cable Tie Attachment Purposes



DETAIL A

Center Grommet Strip with Heat Welded, Reinforced Hem on Rear Side for Rope Attachment Purposes



Rear Side of Windscreen

Note: Failure to Use 50 LB. Break Strength Cable Zip Ties Will Void the Manufacturer's Product Warranty (Cable Ties and Polyester Rope Sold Separately)

Part Number *	Description
VCP9/VCP9DG	9'H Windscreen
VCP12/VCP12DG	12'H Windscreen
VCP-NSS/VCPDG-NSS	X'H Windscreen
VCP-CUSTOM/VCPDG-CUSTOM	Custom Windscreen
CT850B	8"L x 50# Break Strength Black Nylon Cable Ties
560-NET-0029	1/4" Black Polyester Rope

*DG Part Number Denotes Custom Digitally Printed Graphics

Final Layout and/or Graphic Rendering to be Completed upon Verification of Field Measurements

PROPRIETARY AND CONFIDENTIAL

THE INFORMATION CONTAINED IN THIS DRAWING IS THE SOLE PROPERTY OF SPORTSFIELD SPECIALTIES INC. ANY REPRODUCTION IN PART OR AS A WHOLE WITHOUT THE WRITTEN PERMISSION OF SPORTSFIELD SPECIALTIES INC. IS PROHIBITED.

VCP9 9'H and VCP12 12'H Vinyl Coated Polyester Mesh Windscreen

Not To Scale

Sportsfield Specialties Inc 06262020