



Excellence from Design to Installation

1-888-975-3343

Install Guide

Wood Backed Guard Rail Padding

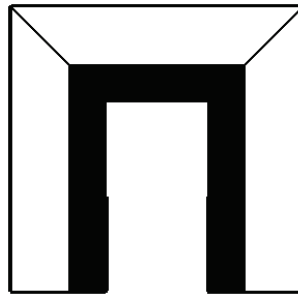
Product No.	Product Description
BSGRP	BaseZone Squared Guard Rail Padding
BFGRP	BaseZone Flat Guard Rail Padding

Guard Rail Padding Overview	ID-00053 Sheet 1
Saddle Bracket	ID-00053 Sheet 2
Hat Bracket	ID-00053 Sheet 3
Joint Bracket	ID-00053 Sheet 4
Galvanized Pipe Straps	ID-00053 Sheet 5

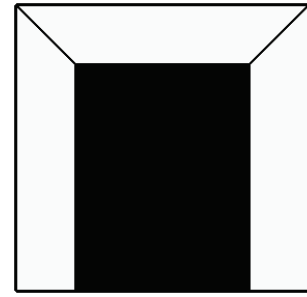
Flat Rail Padding
(BFGRP)



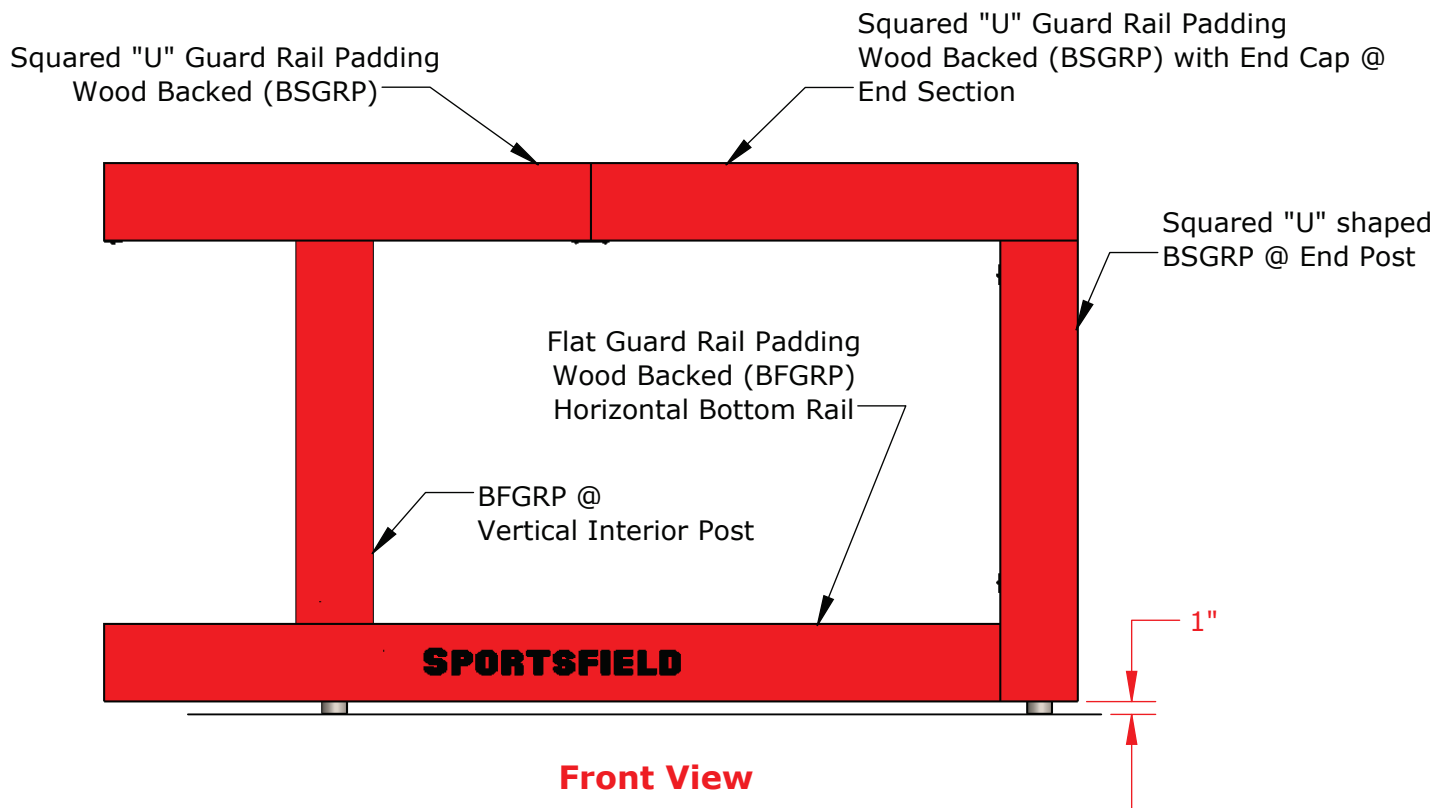
Squared "U" Guard Rail Padding
Wood Backed (BSGRP)



BSGRP With End Cap



A wood backed guard rail padding system typically includes squared "U" shaped top horizontal pads, squared "U" shaped vertical end post pads (BSGRP), flat vertical post pads and bottom horizontal flat pads (BFGRP).

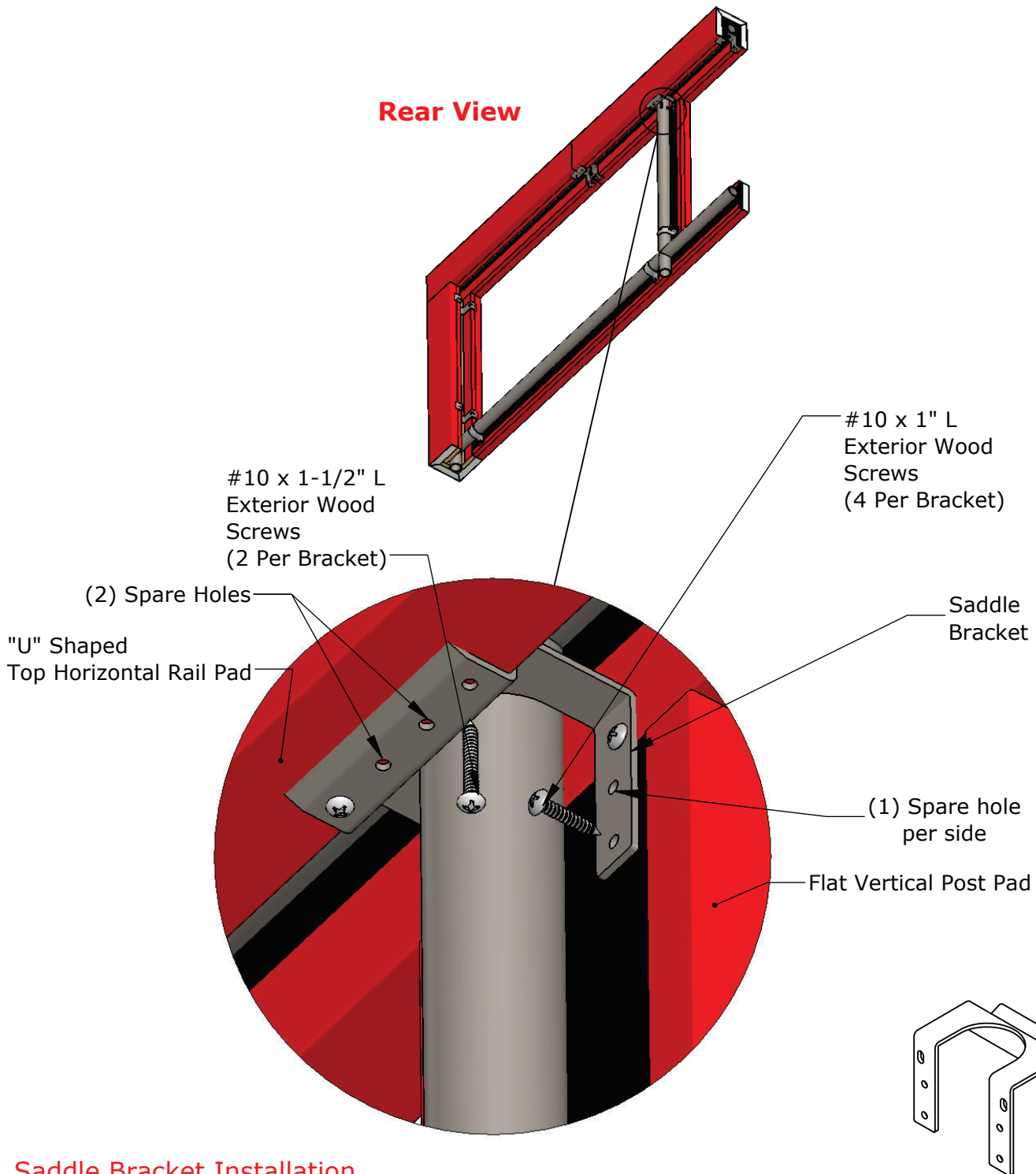


Important Note:

For all brackets/clamps discussed, ensure pads are level, properly aligned and fit well with adjacent pads before fully fastening. It is recommended to do a test fit of the pads prior to installing the attachment hardware.

Please note certain brackets / clamps are specific to rail diameter; however the design and installation are very similar. It is assumed that at this point infill netting has already been installed. The brackets are designed to be able to be installed after the infill netting has been installed.

Rear View



Saddle Bracket Installation

Location: Intersection of top horizontal "U" shaped pads with vertical post flat pads

Notes:

- If desired, the (2) "prongs" may be inserted through the infill netting squares to allow the netting to be in between the bracket and the rail post
- The net binding goes above the bracket
- Spare holes are provided in case a hole is on top of staple or if a fastener strips out
- A snug fit is to be expected. The bracket will help hold the profile shape.
- Bracket is specific to railing diameter

TITLE:

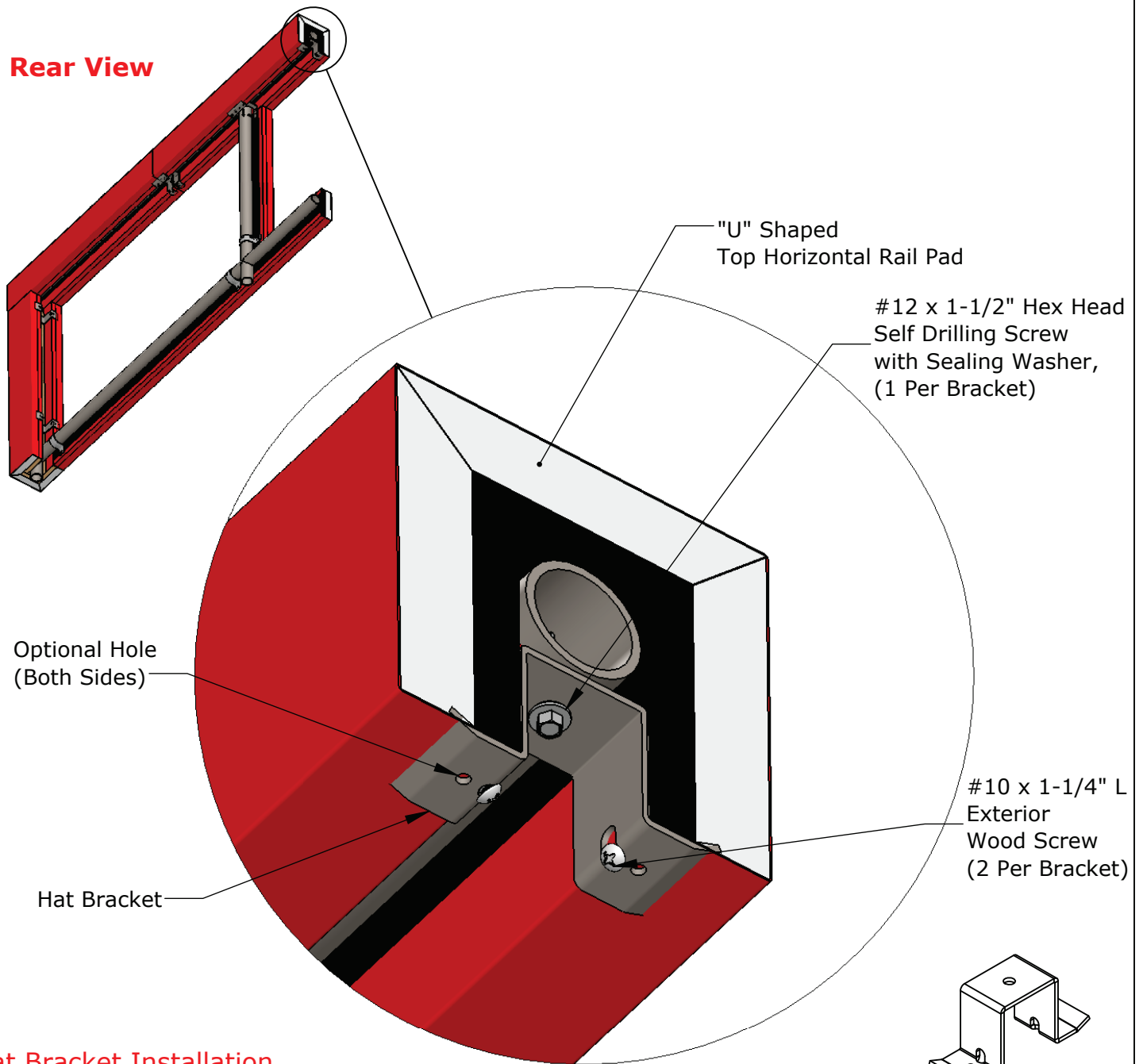
Saddle Bracket

DWG NO:

ID-00053

SHEET 2 OF 5

Rear View



Hat Bracket Installation

Location: Used on "U" shaped pads to fasten the pad to the rail where there are large spans of unbraced pads. Enough hat brackets are provided such that the maximum center to center spacing between pad attachment locations is 32".

Notes:

- Bracket is narrow enough to go through netting squares
- The net binding may be placed above or beneath the bracket
- It is recommended to center and plumb the bracket between the two pad walls, ensure pad is level, and fasten the self-drilling screw prior to the wood screws.
- Fasten the 1.25" wood screws through the obrounds at a 45 degree angle.
- Only use the optional holes on the flat surface when completely necessary.
- A snug fit is to be expected. The bracket will help hold the profile shape.
- Bracket is specific to rail diameter and pad side wall height to prevent uplift

TITLE:

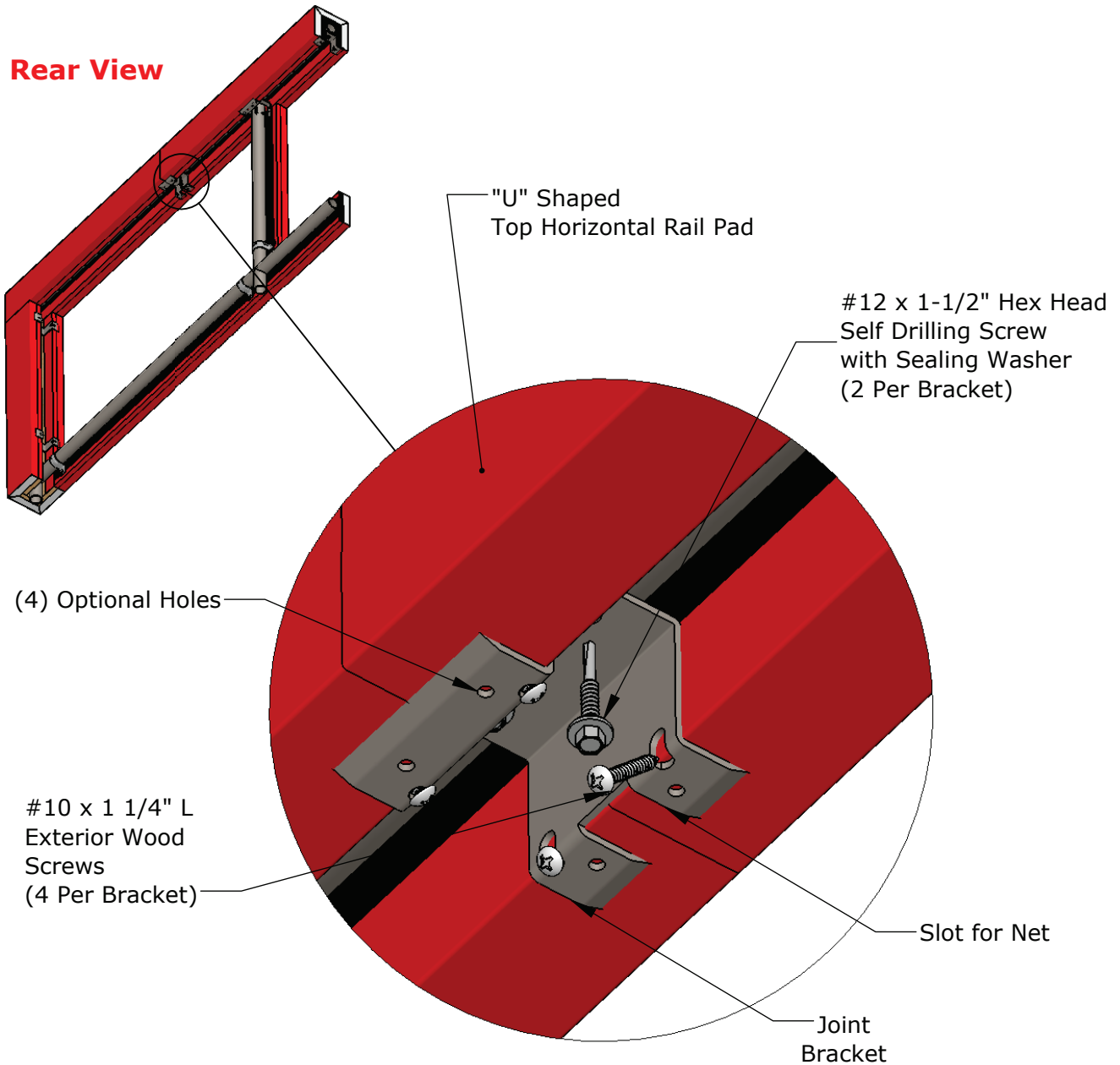
Hat Bracket

DWG NO:

ID-00053

SHEET 3 OF 5

Rear View

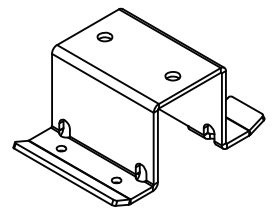


Joint Bracket Installation

Location: "U" pad joint locations where vertical rail posts are not present

Notes:

- A slot is provided to be able to place the bracket through (2) adjacent netting squares.
- The net binding may be placed above or beneath the bracket
- It is recommended to center and plumb the bracket between the two pad walls, ensure pads are level, and fasten the self-drilling screws prior to the wood screws.
- Fasten the 1.25" wood screws through the obrounds at a 45 degree angle.
- Only use the optional holes on the flat surface when completely necessary.
- A snug fit is to be expected. The bracket will help hold the profile in shape.
- Bracket is specific to rail diameter and pad side wall height to prevent uplift



TITLE:

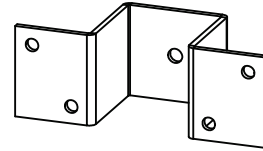
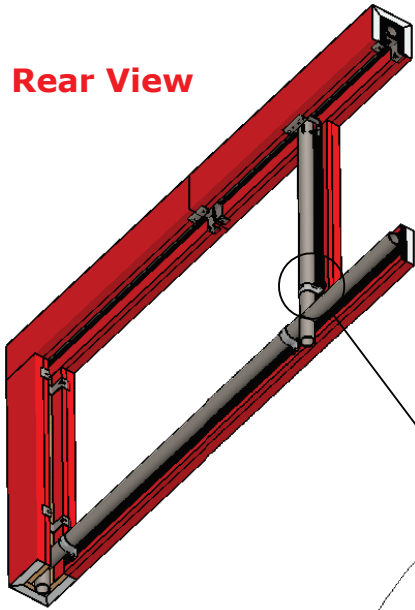
Joint Bracket

DWG NO:

ID-00053

SHEET 4 OF 5

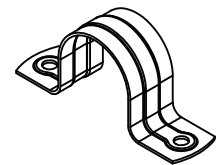
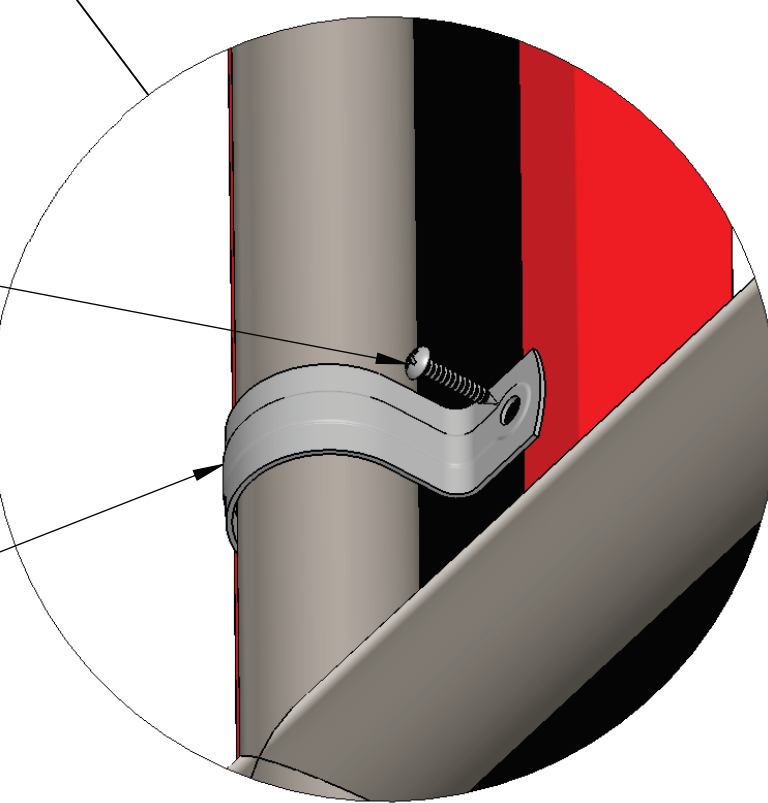
Rear View



Powdercoated black steel brackets are used for square guard railing applications

#10 x 1"
Exterior Wood
Screws
(2 Per Bracket)

Galvanized
Pipe Strap



Pipe Strap Installation

Location: Attaching flat pads to rail in-between locations where the flat pad attaches to other pads. Enough pipe straps are provided such that the maximum center to center spacing between pad attachment locations is 32".

Notes:

- Pipe straps are not required where pads are already securely fastened to the railing
- Use of pipe straps on vertical flat post pads further prevent the rotation of the top "U" pads
- Straps are specific to rail diameter

TITLE:

Galvanized Pipe Straps

DWG NO:

ID-00053

SHEET 5 OF 5