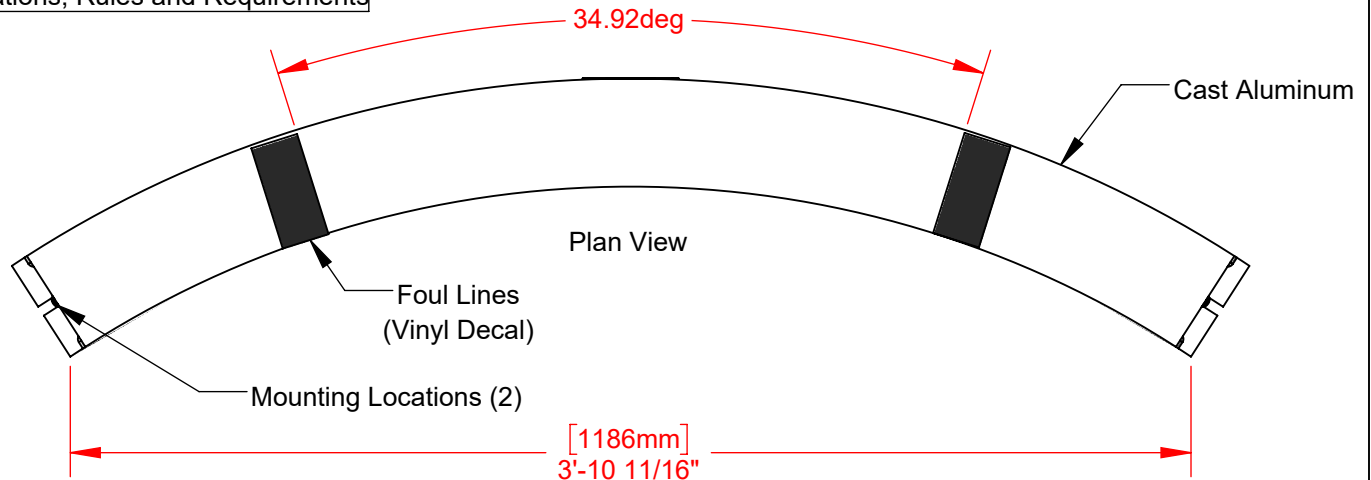
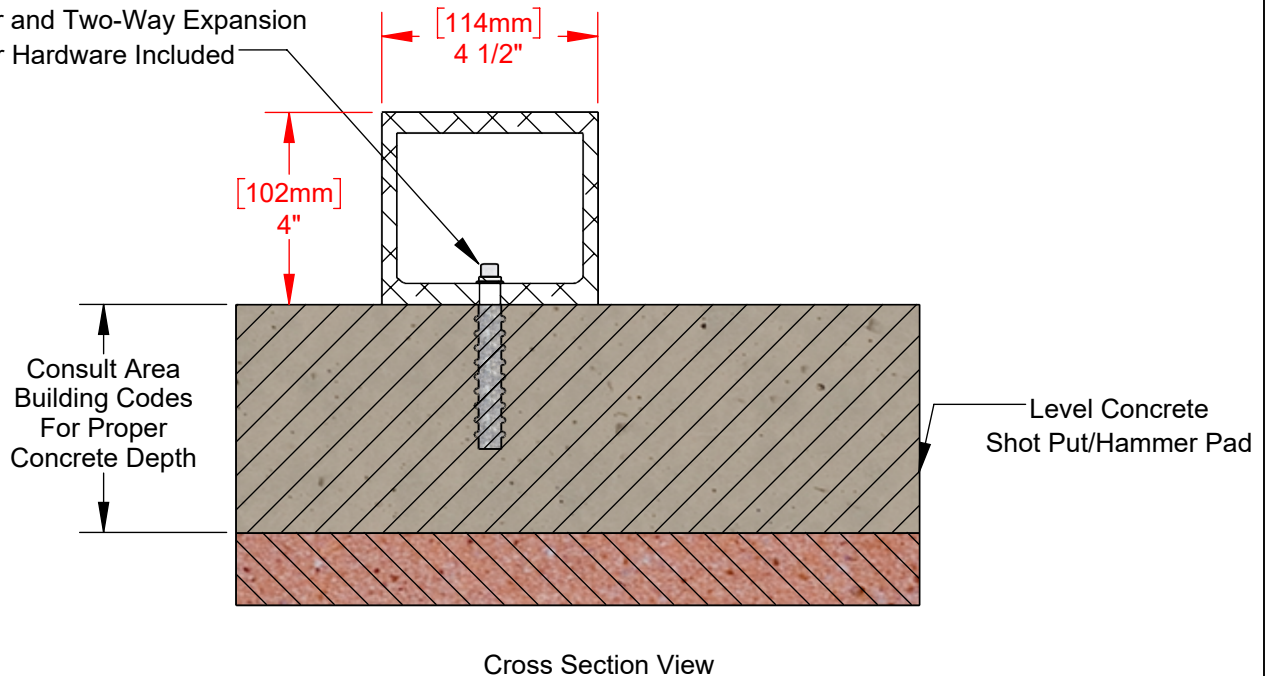


Meets and/or Exceeds Current NFHS Specifications, Rules and Requirements

Powder Coated White Finish



3/8"-16 x 2" Hex Head Bolt, Flat Washer, Lock Washer and Two-Way Expansion Anchor Hardware Included



PROPRIETARY AND CONFIDENTIAL

THE INFORMATION CONTAINED IN THIS DRAWING IS THE SOLE PROPERTY OF SPORTSFIELD SPECIALTIES INC. ANY REPRODUCTION IN PART OR AS A WHOLE WITHOUT THE WRITTEN PERMISSION OF SPORTSFIELD SPECIALTIES INC. IS PROHIBITED.

SPTBCALHS - High School Shot Put Toe Board Level Pad Installation

Not To Scale

Sportsfield Specialties Inc 105785.1-221220