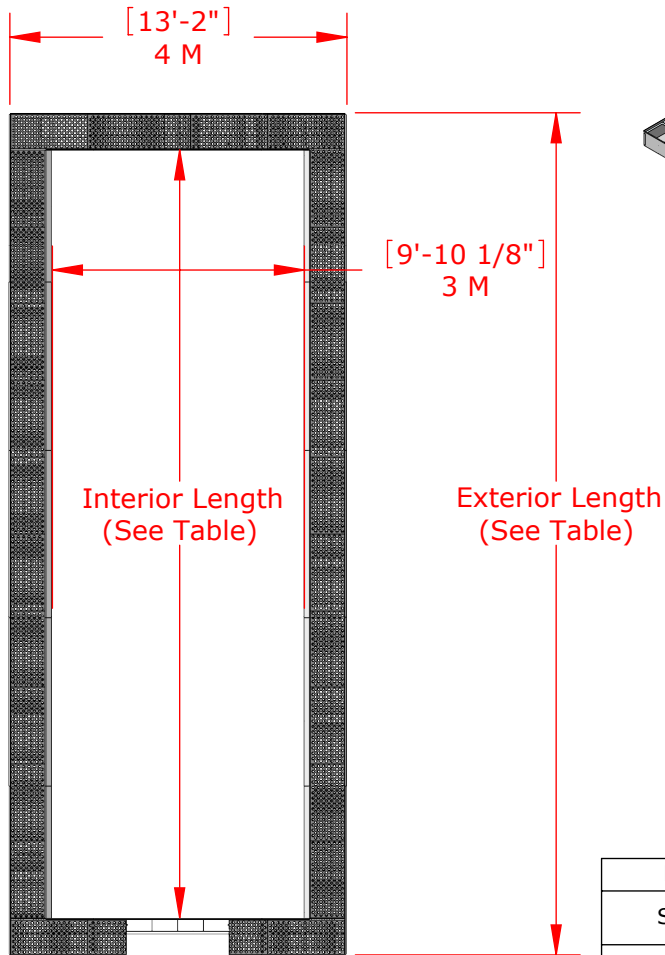
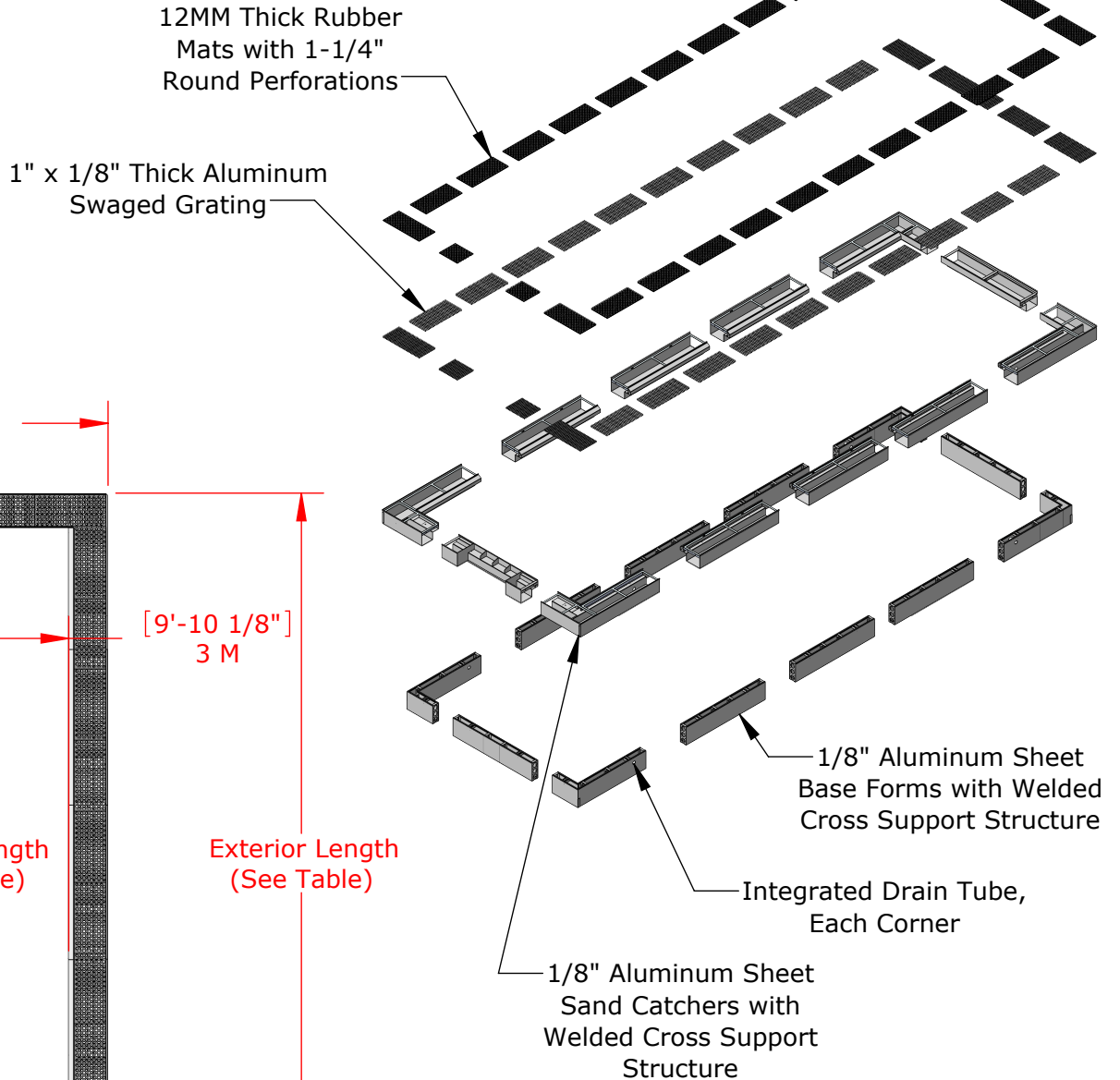


United States Patent #7,641,593, Issued January 5, 2010  
 United States Patent #8,186,125, Issued May 29, 2012  
 United States Patent #8,745,955, Issued June 10, 2014



Part No.	Model	Exterior Length	Interior Length
SPSCOL	College / World Athletics	32'-10 3/4" [10.02 M]	30'-0" [9.14 M]
SPSCHS	High School	26'-4" [8.03 M]	23'-5 1/4" [7.14 M]

**PROPRIETARY AND CONFIDENTIAL**

THE INFORMATION CONTAINED IN THIS DRAWING IS THE SOLE PROPERTY OF SPORTSFIELD SPECIALTIES INC. ANY REPRODUCTION IN PART OR AS A WHOLE WITHOUT THE WRITTEN PERMISSION OF SPORTSFIELD SPECIALTIES INC. IS PROHIBITED.

# JumpForm® Sand Pit with Sand Catchers

Not To Scale

Sportsfield Specialties Inc 105847-021925