



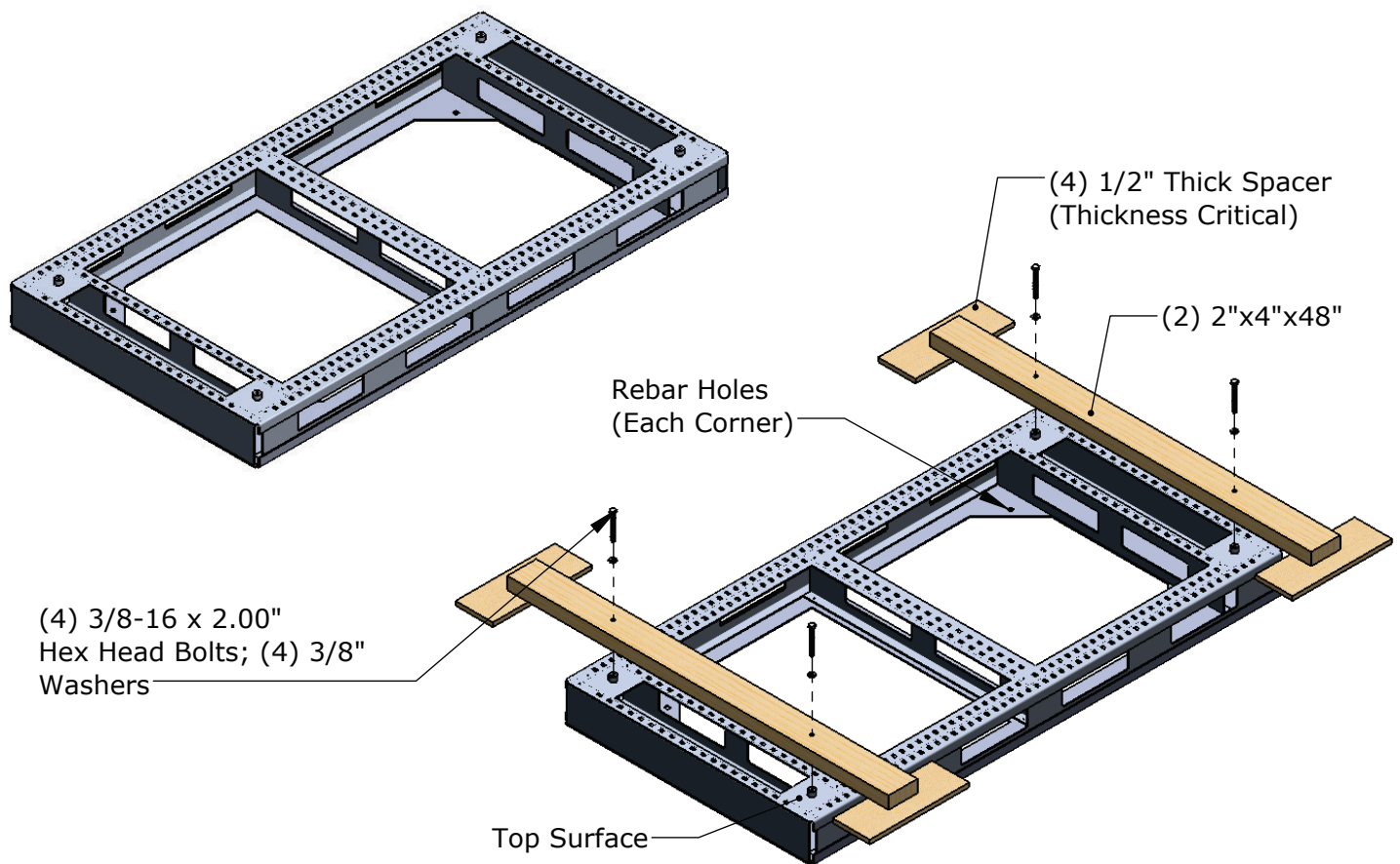
1-888-975-3343

Install Guide

Pole Vault Standard Forming System

Product No.	Product Description
PVSFS	Pole Vault Standard Forming System

Pole Vault Standard Forming System	ID-00054 Sheet 1
Pole Vault Standard Forming System Layout	ID-00054 Sheet 2



1. With the Vault Box installed per its instructions, layout the PVSFS saw cut lines as shown on the layout on Sheet 2. Note the location of the 'zero line'. Once marked, cut through asphalt/concrete along marked lines and remove surface. Clean out the hole created and establish a level base ± 2.0 " below the base of the unit. This will bring the hole to a depth of around 6.50".

2. Support at the proper height either from above (recommended) or below. Wooden bracing is useful in setting the forms at the correct height. The top surface of the form (as indicated in the figure above) should be on the same plane as the asphalt or concrete that was previously saw cut, so that only the threaded standoffs are protruding from the surface. Once properly located, secure forms in place with rebar through the provided holes.

3. Place the PVSFS forms in their respective cutouts, and position according to the layout on page 2, ensuring that the forms are exactly parallel with the center line and are offset the correct amount from the zero line as indicated on the drawing.

4. Mix and pour concrete so that it fills the entire void of each cut-out, ensuring that the top of the pour is even with the grade of the asphalt (1/2" below finish grade).

5. Once cured, remove any bracing and replace the (8) 3/8-16 x 2.00 fully threaded hex head bolts and 3/8" washers in the threaded standoffs to plug for track surfacing and eventual standard mounting.

TITLE:

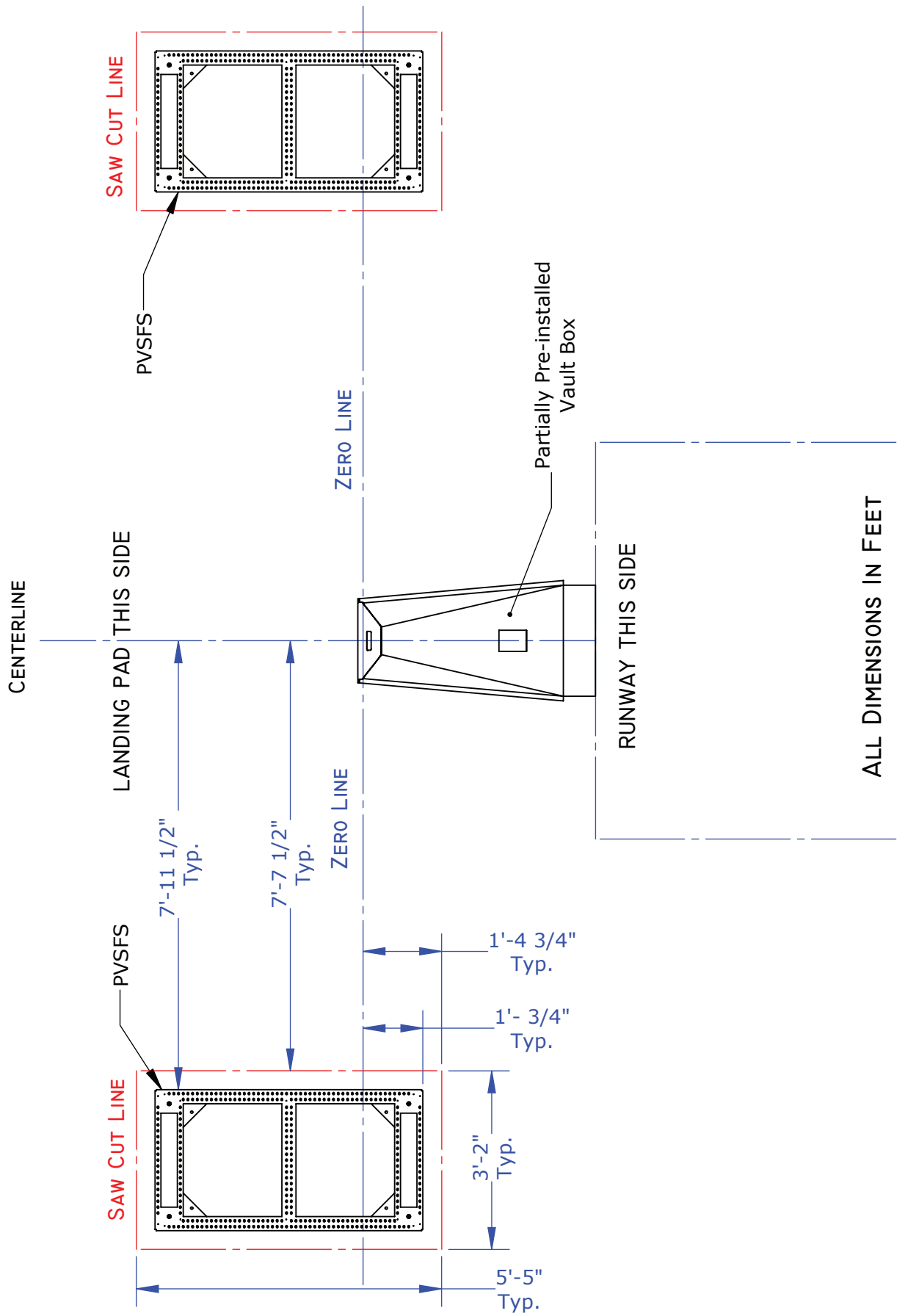
Pole Vault Standard Forming System

DWG NO:

ID-00054

SHEET 1 OF 2

NOTE: ROUGHLY 19 CUBIC FEET OF CONCRETE REQUIRED



TITLE: Pole Vault Standard Forming System Layout

DWG NO:

ID-00054

SHEET 2 OF 2