



1-888-975-3343

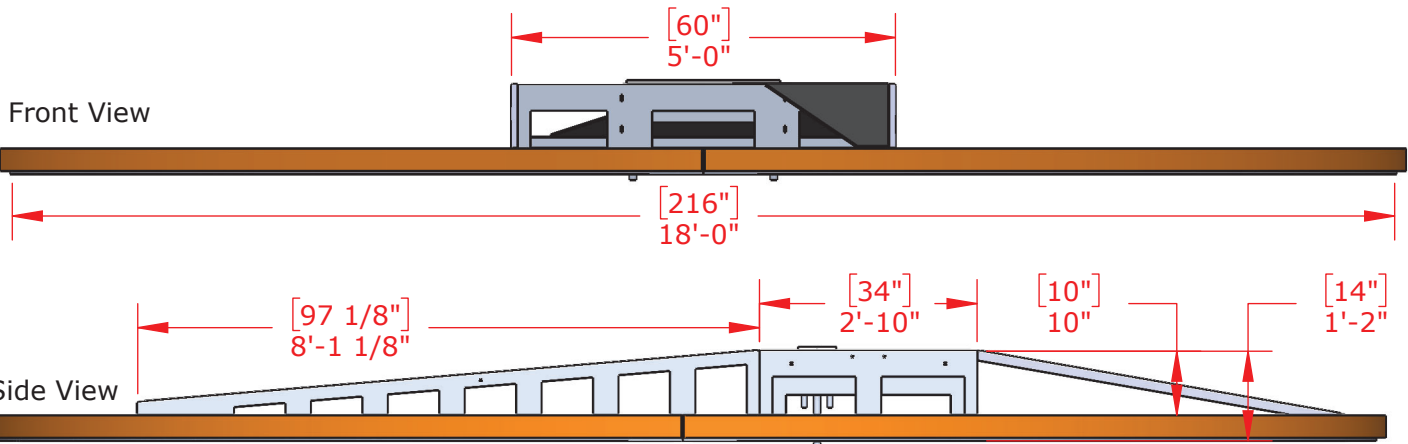
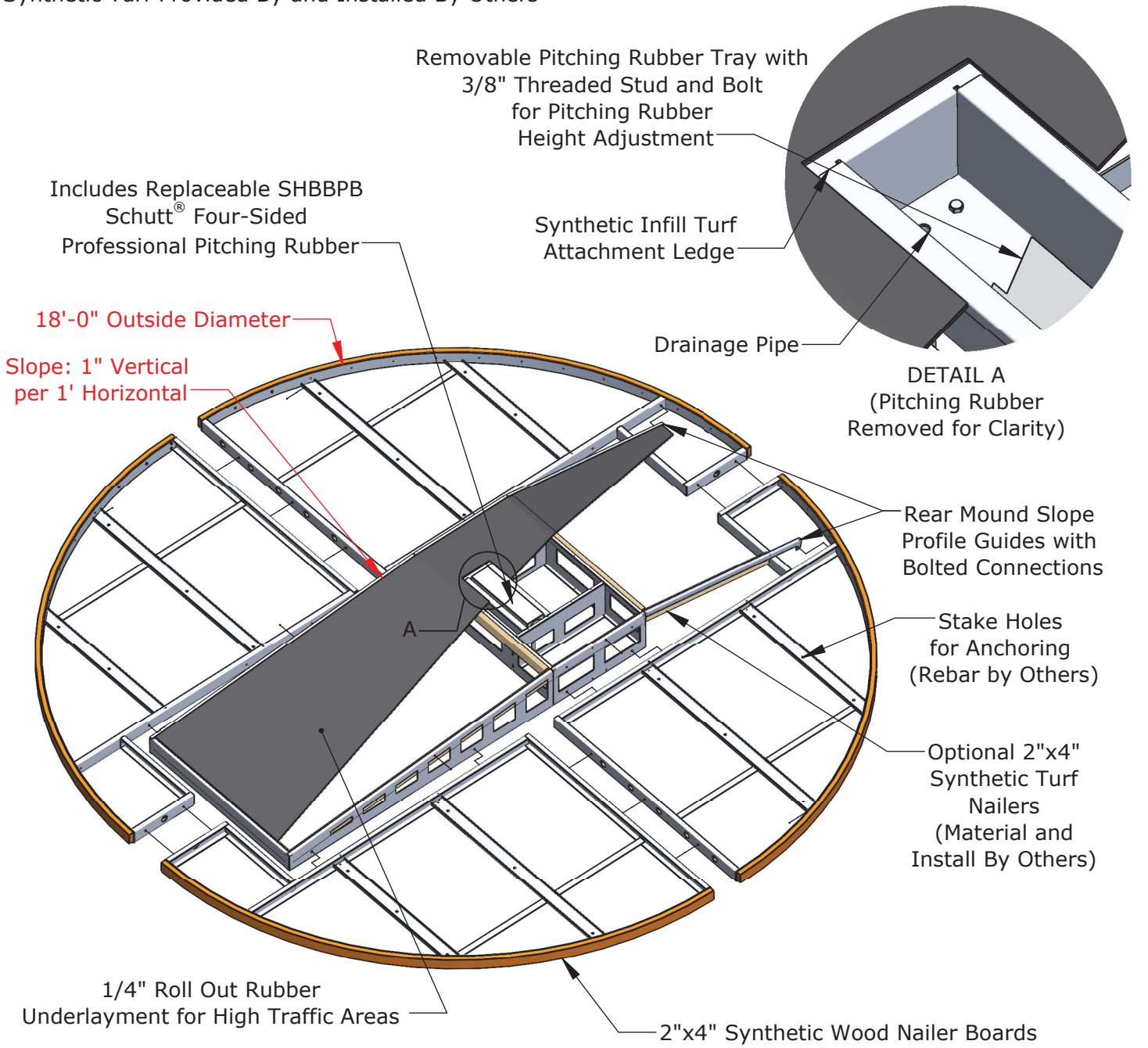
Install Instructions

Baseball Pitching Mound Forming System

Product No.	Product Description
PMFSB	Baseball Pitching Mound Forming System

System Overview.....	ID-00168
System Assembly.....	ID-00169
System Installation.....	ID-00171

Synthetic Turf Provided By and Installed By Others



TITLE: System Overview	DWG NO: ID-00168	SHEET 1 OF 1

Step 1

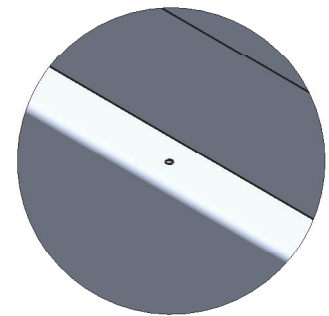
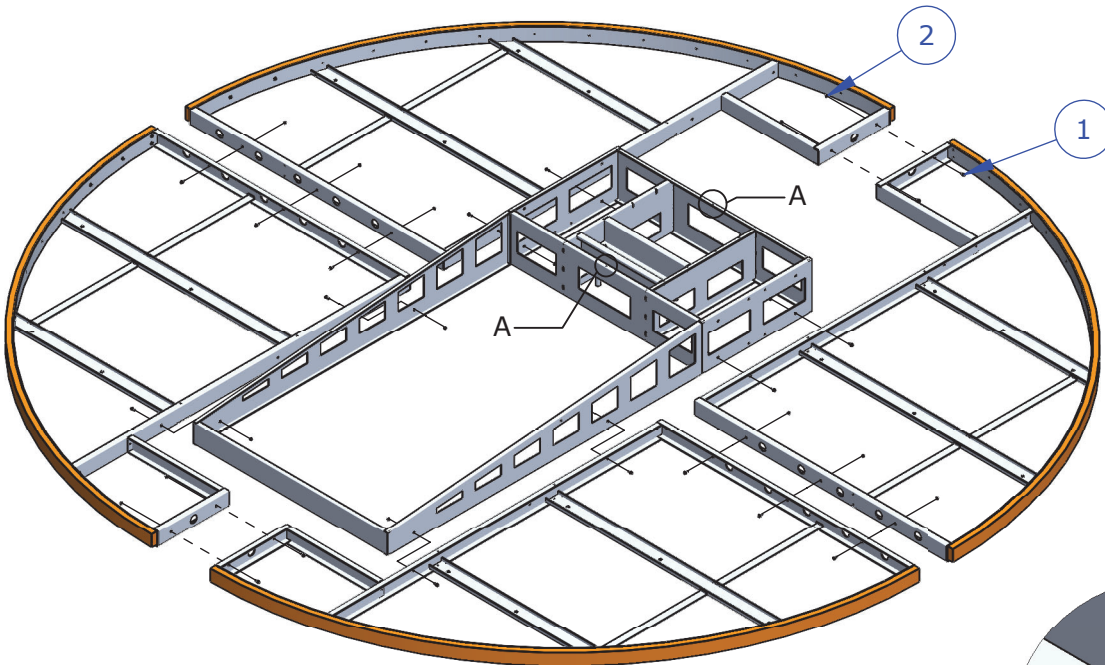
Check project specific drawings to determine field location. The overall forming system height is 14". Align the top surface of the outer ring with the desired grade level of the infill turf (typically top of stone). Excavate or add subbase material as required to ensure finish grade.

Step 2

Set the location of the forming system center section such that the front edge of pitching rubber is 60'-6" from the apex of home plate. Orient forming system with home plate by aligning centered reference holes in front of and behind pitching rubber recess with string line coming from the apex of home plate (See Detail A).

Step 3

Bolt the (4) corner sections to the center section at all hole locations using shown connection hardware.



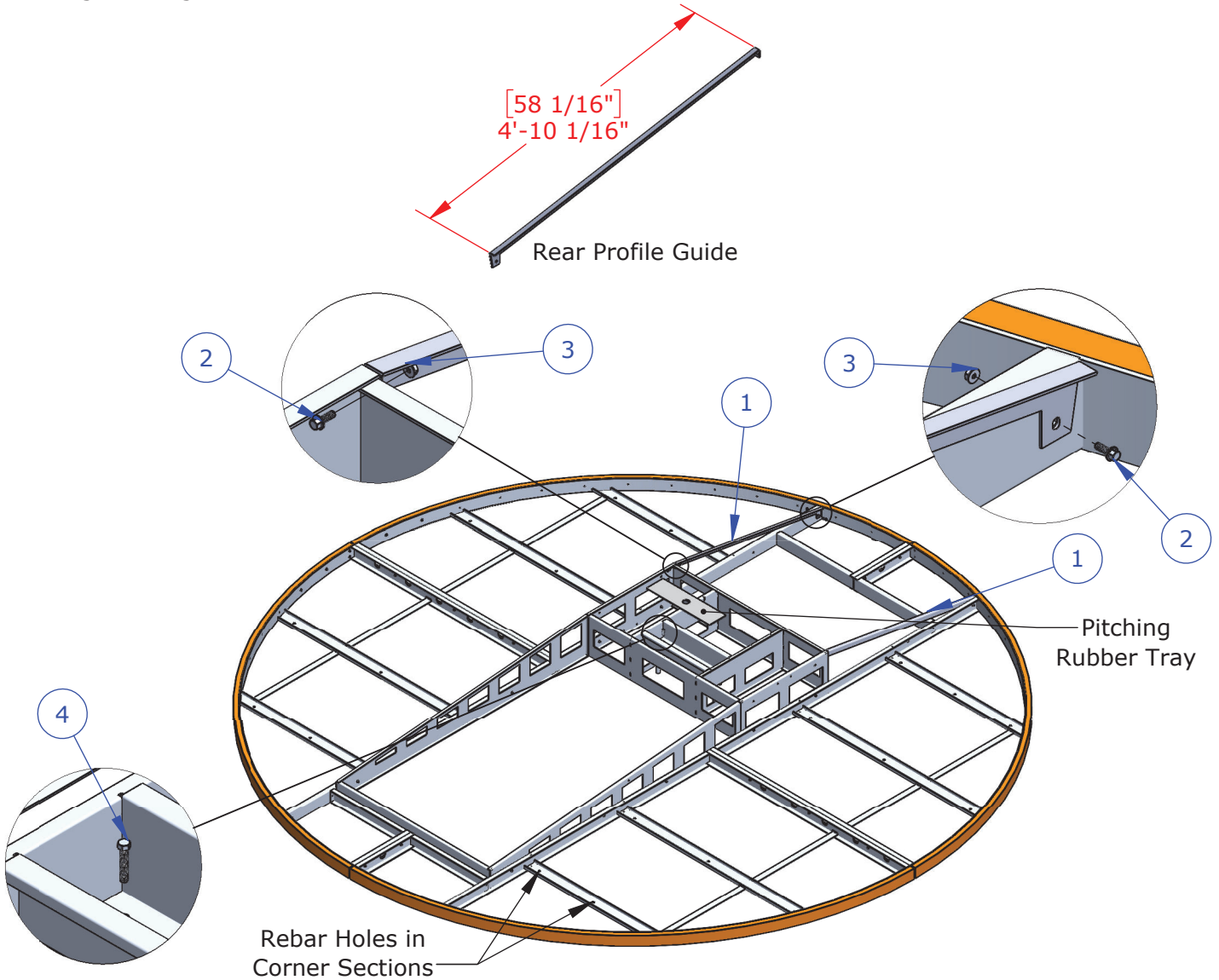
DETAIL A
Forming System to Home Plate
Alignment Holes

ITEM NO.	QTY.	SAP Part Number	DESCRIPTION
1	18	101-HWH-0001	1/4-20 X.75 Full Thread Serrated Flange Bolt
2	18	107-HXN-0009	1/4-20 S.S. Serrated Hex Nut

TITLE:	DWG NO:
System Assembly	ID-00169
	SHEET 1 OF 2

Step 4

Bolt the (2) rear profile guides to the center and corner sections at all hole locations. Refer to the images below and the System Overview to identify and place each guide. Note that there is a left/right configuration.



Step 5

Four 3/8" bolts are included for leveling the pitching rubber tray.

Step 6

Stake the forming system in place by driving #4 rebar through the provided holes in each corner section. Lay additional rebar lengthwise across side sections or in center section of forming system if desired.

ITEM NO.	QTY.	SAP Part Number	DESCRIPTION
1	2	Undefined	Profile Slope, Rear
2	4	101-HWH-0001	1/4-20 X.75 Full Thread Serrated Flange Bolt
3	4	107-HXN-0009	1/4-20 S.S. Serrated Hex Nut
4	4	101-HHC-0058	3/8-16 x 2.00" Hex Head Bolt, 304 SS, Fully Threaded

TITLE:

System Assembly

DWG NO:

ID-00169

SHEET 2 OF 2

Note: Forming system can be filled with either concrete or stone aggregate

Step 1

If attaching the synthetic turf with mechanical fasteners (screws/staples), it is highly recommended that 2"x4" nailers (not included with forming system) be attached to the forming system in the locations shown below prior to filling with concrete or aggregate.

If attaching the synthetic turf with adhesive or hook and loop, the 2"x4" nailers are not required in most installation applications.

Each of these attachment methods provide a surface for a removable turf center section to be attached in the highest traffic area of the mound.

Step 2

Fill forming system with concrete or aggregate. Approximately 6 yards of concrete or aggregate is required per forming system. Keep pitching rubber recess free of fill material by covering/plugging opening and do not cover optional 2"x4" nailers with concrete, if used.

Step 3

Form and smooth concrete or aggregate from the center section outward, making a clean, uniform slope from center section to outer ring.

Step 4

Once concrete or aggregate has been placed, lay factory precut roll out rubber underlayment on center section as shown below.

Step 5

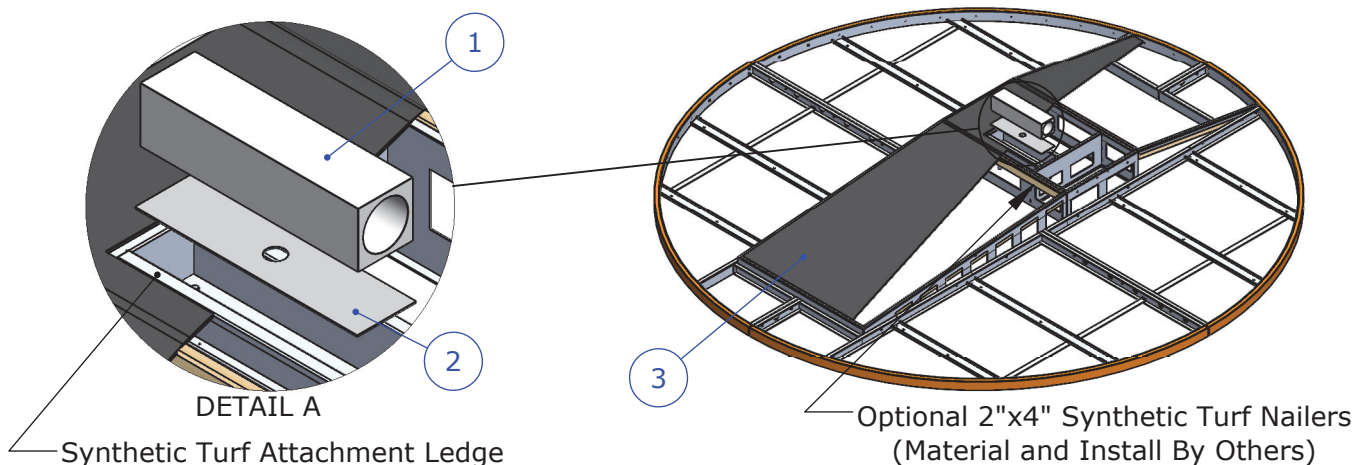
Cut and secure the synthetic infill turf to the provided infill turf attachment ledges or optional 2"x4" nailers, if used. Cut and fold turf down into pitching rubber recess and secure. Synthetic turf and attachment methods provided by others.

Step 6

Place the pitching rubber into the recess. Adjust the pitching rubber tray height as needed by adjusting leveling bolt heights. The turf that was folded into the pitching rubber recess in Step 5 may need to be cut/shaved to allow the pitching rubber to fit snugly.

Step 7

Add infill material around pitching rubber as necessary to achieve finish grade.



ITEM NO.	QTY.	DESCRIPTION	ERP Part Number
1	1	Schutt Official Size Four Way Professional Pitching Rubber	SHBBPB
2	1	Pitching Rubber Tray, Center Section	Undefined
3	1	Rubber Underlayment, PMFS	Undefined

TITLE: System Installation	DWG NO: ID-00171
	SHEET 1 OF 1