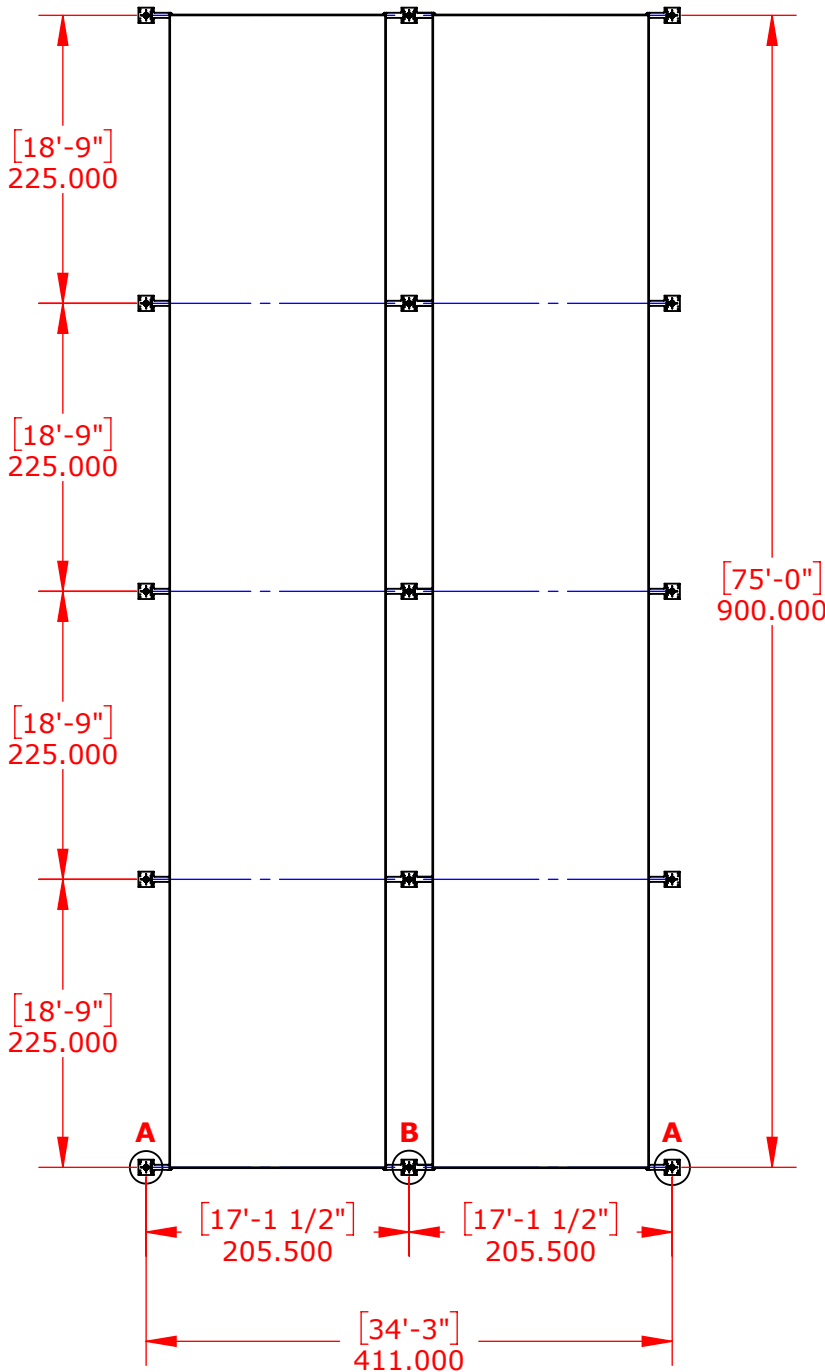
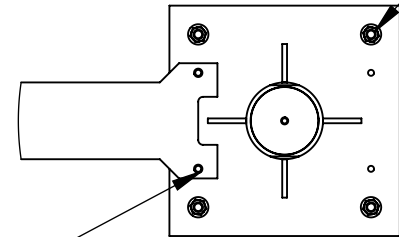


Note: All measurements are center-to-center of pole



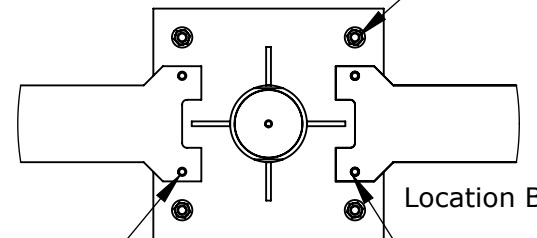
1/2" X 5 1/2"  
Galvanized Wedge Anchor  
w/ Hex Nut and Flat Washer



Location A

— Orient uprights with extension arm mounting holes facing the netting.  
 Uprights in end rows will only use the inside set of mounting holes.

1/2" X 5 1/2"  
Galvanized Wedge Anchor  
w/ Hex Nut and Flat Washer



Location B

— Orient uprights with extension arm mounting holes facing the netting.  
 Uprights in center row will use with both sets of mounting holes.

Foundation requirements vary based on local codes and soil conditions

**PROPRIETARY AND CONFIDENTIAL**

THE INFORMATION CONTAINED IN THIS DRAWING IS THE SOLE PROPERTY OF SPORTSFIELD SPECIALTIES INC. ANY REPRODUCTION IN PART OR AS A WHOLE WITHOUT THE WRITTEN PERMISSION OF SPORTSFIELD SPECIALTIES INC. IS PROHIBITED.

**Plate Mount Overhead Batting Tunnel  
 Double Baseball Pole Layout**

Not To Scale

Sportsfield Specialties Inc 07102020