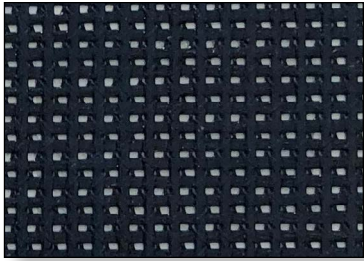


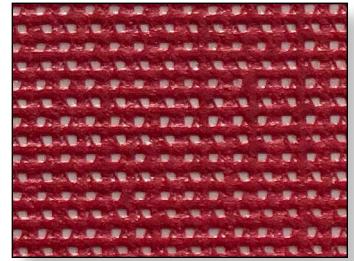
WINDSCREEN COLOR CHART



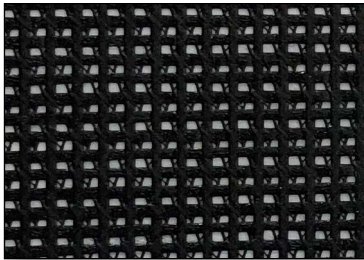
Navy Blue



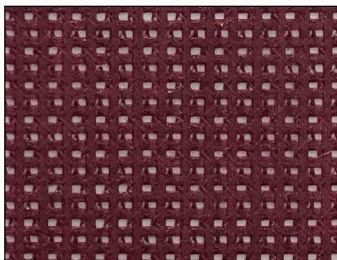
Royal Blue



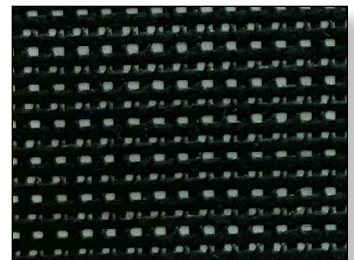
Red



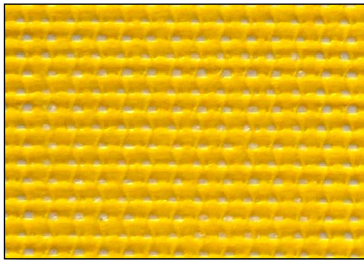
Black



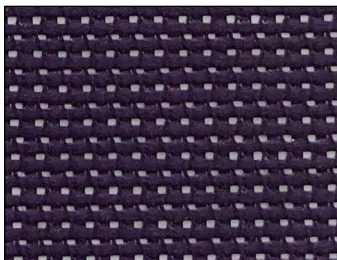
Burgundy



Green



Yellow



Purple

PRODUCT SPECIFICATIONS

VINYL COATED MESH 9 x 12

Rot & Tear Resistant • Heat Sealable • Breathable, Lightweight, Flexible
High Tensile Strength • UV & Mildew Resistant • Weather Resistant • Easy Fabrication
Abrasion Resistant

Product Characteristic Chart

Product Properties	Test Method	Results
Base Fabric		9 x 12 1000 D Poly
Weight	5041	8 oz./y ² ± 1 oz.
Width		57" / 75"
Put Up		200 or 250
Approx. Roll Weight		150-190 lbs / 200-250 lbs
Tensile Strength	5100 (warp x fill)	210 x 220
Adhesion	5970 (warp x fill)	8 x 8 lbs/2 in.
Tear Strength	5134 (warp x fill)	70 x 70 lbs
Mildew Resistance		Resistant
UV Resistance		Resistant
Flame Resistance*		Non-FR

Disclaimer: Above values are average values, as tested in our laboratory. All productions are subject to variations. This information is not intended to be used as strict specifications. All data obtained in our laboratory is considered accurate, however, no warranty is expressed or implied.

* Available in a FR formula in product-run quantities. Additional charges apply.



Color output may not be exact as on this document due to variations in monitors and printers. Color approval must be based on specific colors (vinyl samples, ink samples, digital print samples, etc.) rather than their visual representation in this document. The designs and layouts in this document are the property of Sportsfield Specialties and may not be reproduced without permission and/or written consent.

© 2021 Sportsfield Specialties, Inc. Toll-Free: 888-975-3343